

CATÁLOGO DE PEÇAS

INTRODUÇÃO

As ilustrações dos desenhos em vistas explodidas mostram a montagem típica dos vários conjuntos e peças componentes. Identificando a peça no nº de referência das vistas explodidas, se identifica também o código, nome da peça e/ou conjunto.

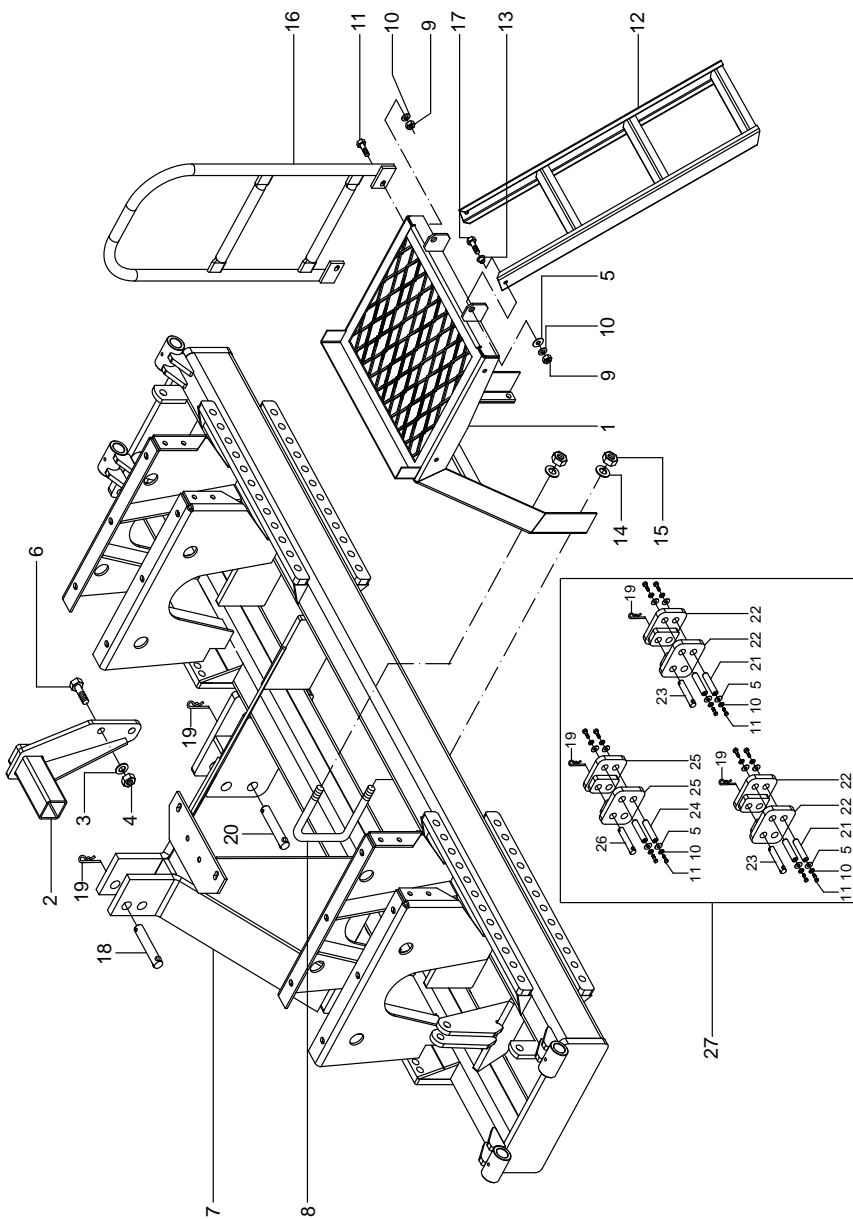
As designações de conjuntos e/ou peças direita e esquerda, entendem-se em relações a máquina vista por trás quando acoplada no trator.

Os pedidos de peças deverão ser enviados ao setor de vendas de peças de reposição da **JUMIL** em impresso padronizado, constando-se a série, modelo e ano de fabricação da máquina, gravados na plaqueta de identificação da mesma.

DEVIDO AO CONTÍNUO DESENVOLVIMENTO INDUSTRIAL E TECNOLÓGICO, A **JUMIL** RESERVA-SE NO DIREITO DE EFETUAR MODIFICAÇÕES NO PROJETO DA MÁQUINA, SEM AVISO PRÉVIO.

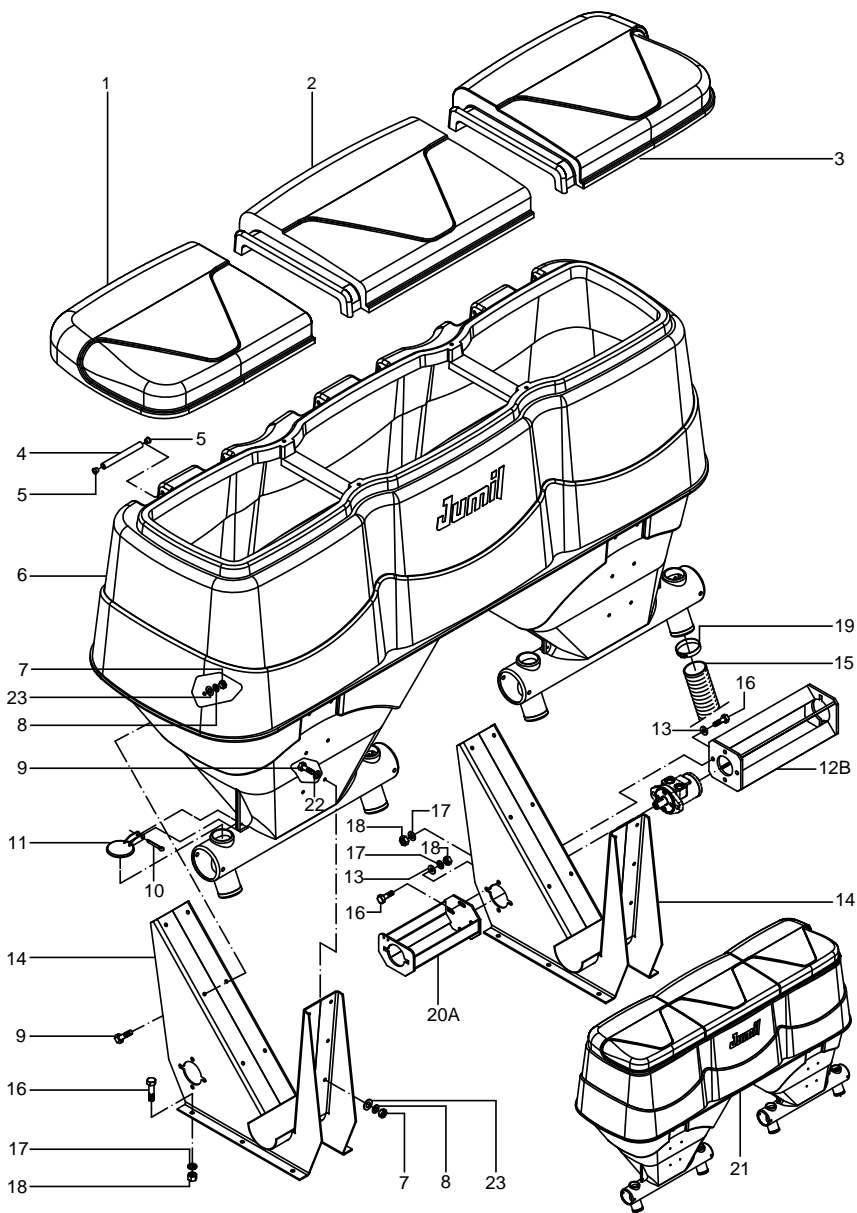
ÍNDICE

QUADRO E PLATAFORMA	4
DEPOSITO E BASE DE FIXACAO	6
TRANSMISSAO HIDR E ROSCA S/FIM	8
ACIONAMENTO MOTOR HIDRAULICO	10
CAIXA DE TRANSMISSAO	12
CATRACAACIONAMENTO TRANS MEC	14
CONJ SUPORTE ACIONAMENTO CATRACA	16
UNID SULCADORAADUB HASTE ALADA	18
UNID SULCADORAADUB HASTE "Y"	20
UNID CULTIVO CANA QUEIMADA	22
CONJ DISCO GRADE 18" REC DUPLO	24
CONJ DISCO GRADE 18" REC TRIPLO	26
UNID SULCADORAADUB HASTE SIMPLES	28
CONJ DISCO COBRIDOR	30
CONJ ROLO DESTORROADOR	32
MARCADOR DE BANQUETA	34
ACIONAMENTO MARCADOR DE LINHA	36
CONJ DISCO MARCADOR LINHA	38
CONJ DISCO CORTE 24"	40
CONJ DISCO CORTE 24" FIXO	42
KIT COLANTE JM3520	44



REF	CODIGO	DESCRICAO
1	17.35.650	PLATAFORMA
2	17.35.080	BRACO SUSTENTACAO
3	70.19.160	ARRUELA DE PRESSAO B18 DIN127 ZN
4	70.11.357	PORCA SEXT MA18 DIN 934-5 ZN
5	70.18.013	ARRUELA LISA 1/2"
6	70.04.729	PF SEXT RT MA18X60 DIN 933-8.8
7	17.35.050	QUADRO 2L
8	17.32.208	GRAMPO DE FIXACAO
9	70.11.355	PORCA SEXT MA12 DIN 934-5 ZN
10	70.19.157	ARRUELA DE PRESSAO B12 DIN127 ZN
11	70.04.695	PF SEXT RT MA12X30 DIN933-8.8
12	17.35.663	ESCADA
13	17.35.683	BUCHA FLANGEADA
14	70.19.159	ARRUELA DE PRESSAO B16 DIN127 ZN
15	70.11.356	PORCA SEXT MA16 DIN 934-5 ZN
16	17.35.601	CORRIMAO
17	70.04.697	PF SEXT RT MA12X40 DIN933-8.8
18	50.01.038	PINO DE ENGATE
19	70.16.026	TRAVA DE ACO 3/16"X94
20	17.36.110	PINO REMANCHADO 1.1/8"X140
21	17.35.802	EIXO ENGATE
22	17.35.801	PLACA FIXACAO MAIOR
23	44.01.208	PINO ENGATE INFERIOR
24	17.35.803	EIXO ENGATE
25	17.35.800	PLACA FIXACAO MENOR
26	37.01.091	PINO ENGATE SUPERIOR
27 *	17.35.812	KIT ADAP PROLONGADOR CABECALHO

* - O ITEM 27 E O CODIGO DO KIT ADAPTACAO PARA TRATOR NAO
CANAVIEIRO

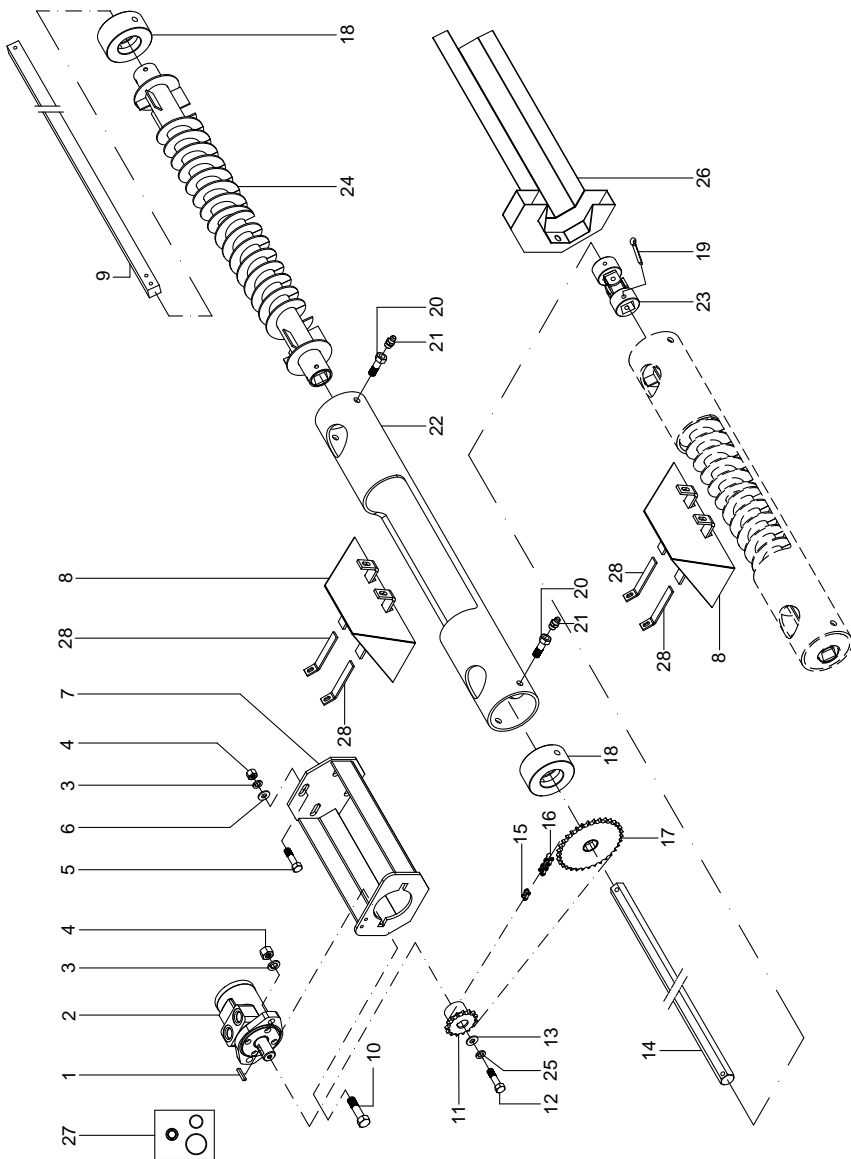


DEPOSITO E BASE DE FIXACAO

REF	CODIGO	DESCRICAO
1	27.38.432	TAMPALATERAL ESQUERDA
2	27.38.434	TAMPA CENTRAL DIREITA
3	27.38.435	TAMPALATERAL DIREITA
4	27.38.426	EIXO DA DOBRADICA
5	90.01.055	TAPO 10X25
6	17.35.477	DEPOSITO FERTILIZANTES 1100L
7	70.11.413	PORCA SEXT INOX MA10 DIN934-A2
8	70.19.186	ARRUELA PRESSAO INOX B10 DIN127A2
9	70.34.245	PF SEXT RT INOX MA10X30 DIN933-A2
10	70.17.026	CONTRAPINO 3/16" X 1"
11	17.35.395	TAMPA INSPECAO
12	17.35.136	SUPORTE EIXO TRANSMISSAO
13	70.18.013	ARRUELA LISA 1/2"
14	17.35.482	BASE DEPOSITO
15	17.35.606	MANGUEIRA FLEXIVEL 3"X3000
16	70.04.695	PF SEXT RT MA12X30 DIN933-8.8
17	70.19.157	ARRUELA DE PRESSAO B12 DIN127 ZN
18	70.11.355	PORCA SEXT MA12 DIN 934-5 ZN
19	71.06.062	ABRACADEIRA ROSCA S/FIM 64-83
20	17.35.647	SUPORTE MOTOR HIDRAULICO
22	11.03.569	ARRUELA LISA INOX 1.5/8"X10,3X1/8
23	70.18.237	ARRUELA LISAA10,50 DIN125-ZN

A - UTILIZADO NO ACIONAMENTO HIDRAULICO

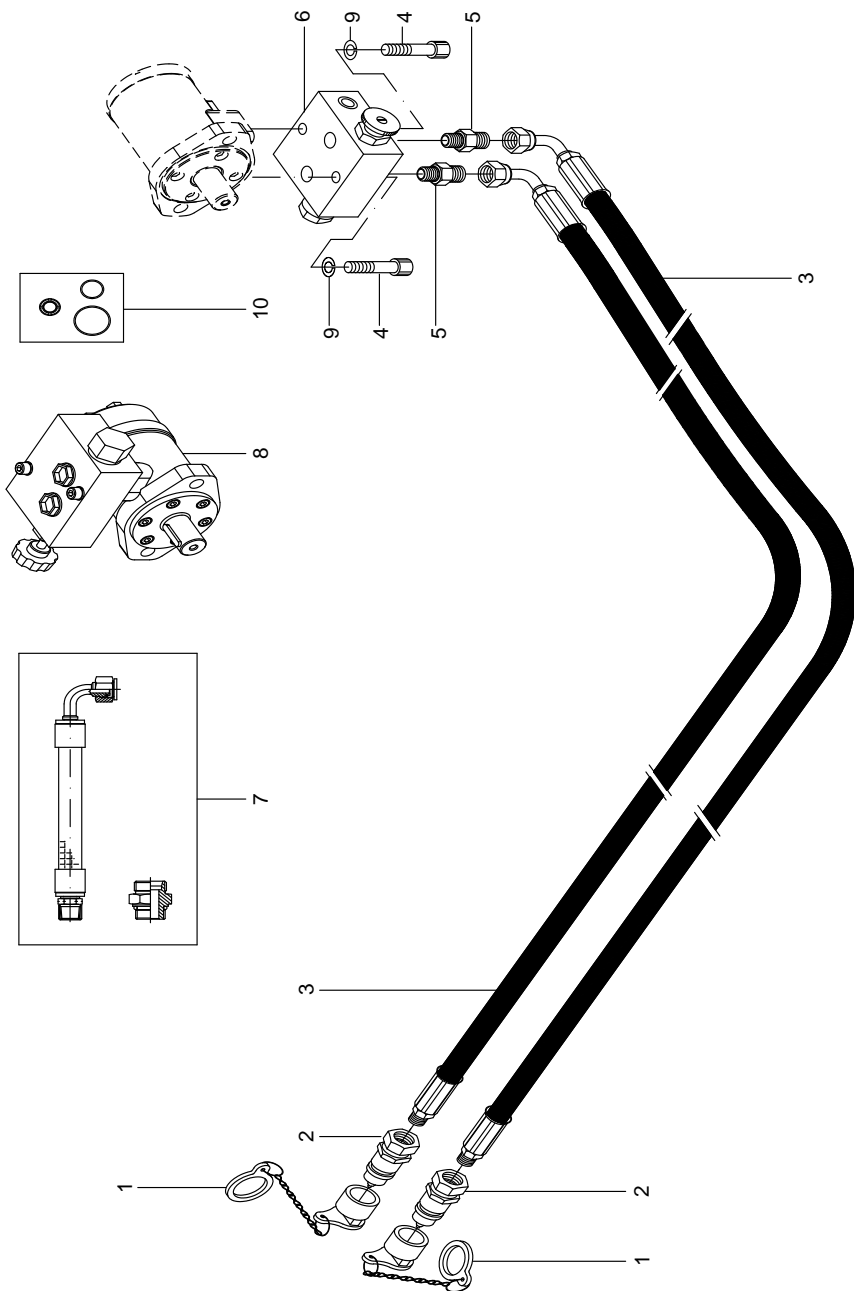
B - UTILIZADO NO ACIONAMENTO MECANICO



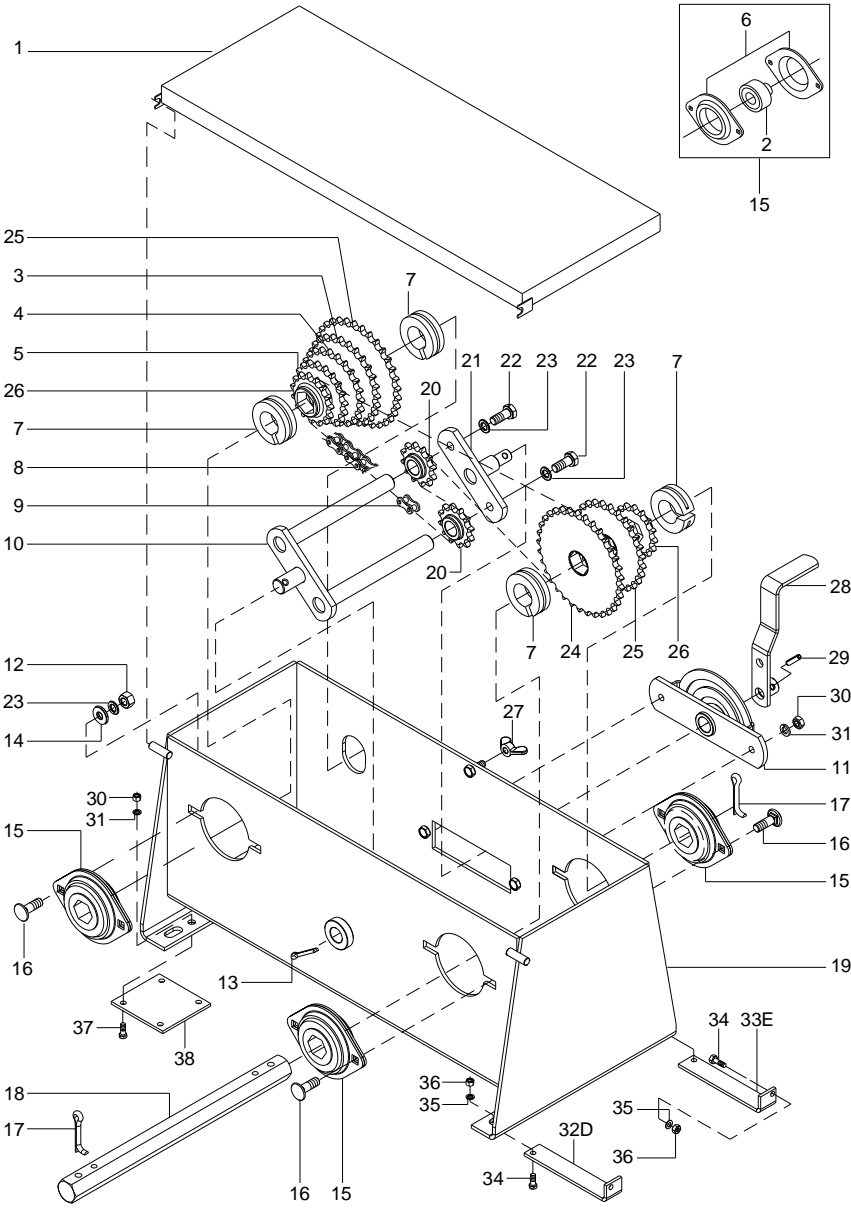
REF	CODIGO	DESCRICAO
1	71.01.025	CHAVETA QUADRADA A1/4X1/4X1.1/4
2	92.03.006	MOTOR HIDRAULICO ORBITAL 100CM3
3	70.19.157	ARRUELA DE PRESSAO B12 DIN127 ZN
4	70.11.355	PORCA SEXT MA12 DIN 934-5 ZN
5	70.04.436	PF SEXT RT MA12X30 DIN 933-5.6 ZN
6	70.18.013	ARRUELA LISA 1/2"
7	17.35.647	SUPORTE MOTOR HIDRAULICO
8	17.35.469	DEFLETOR
9	17.35.307	EIXO DISTRIBUIDOR
10	70.04.438	PF SEXT RT MA12X40 DIN 933-5.6
11	17.35.591	ENGRENAGEM Z15
12	70.01.100	PF SEXT RT 1/4UNCX1-G5
13	17.35.605	ARRUELA LISA
14	17.35.302	EIXO TRANSMISSAO 1.1/16"X344
15	83.04.012	EMENDA TIPO 26 ABNT 10A-1
16	83.01.099	CORRENTE ROLOS ABNT 10AX75 ELOS
17	A 17.35.613	ENGRENAGEM TRANSMISSAO Z-36
	P 17.35.467	ENGRENAGEM TRANSMISSAO Z42
18	17.35.092	BUCHA FIXACAO
19	70.17.044	CONTRAPINO 1/4"X2.1/2"
20	37.37.617	PARAFUSO PARA LUBRIFICACAO
21	93.05.005	GRAXEIRA RETA M8X1 DIN71412A
22	17.35.484	TUBO ROSCA CONDUTORA
23	17.35.593	CARDAN
24	17.35.091	ROSCA DISTRIBUIDORA
25	70.19.002	ARRUELA PRESSAO 1/4-LEVE
26	17.35.483	PROTETOR EIXO TRANSMISSAO
27	92.03.008	JOGO VEDACAO MOTOR VERION 100 CM3
28	17.35.809	SUPORTE DEFLETOR

P - PADRAO

A - OPCIONAL



REF	CODIGO	DESCRICAO
1	92.02.102	PROTETOR FEMEA BIT-8
2	92.02.005	ENGATE RAPIDO MACHO 1/2NPT X 30
3	92.12.004	FH DKO M16XM1/4XM16X3100
4	70.05.426	PF ALLEN CC RP 5/16UNCX2.1/4-G8.2
5	92.05.160	UNIAO MACHO 12LX7/8"UNF+O ST
6	92.01.032	VALVULA REGULADORA FLUXO
7	92.11.039	KIT FH DKO ACION HIDR JM3520SH
8	17.35.752	CONJ MOTOR C/ VALVULA REG VAZAO
9	70.19.003	ARRUELA PRESSAO 5/16-LEVE
10	92.03.008	JOGO VEDACAO MOTOR VERION 100 CM3

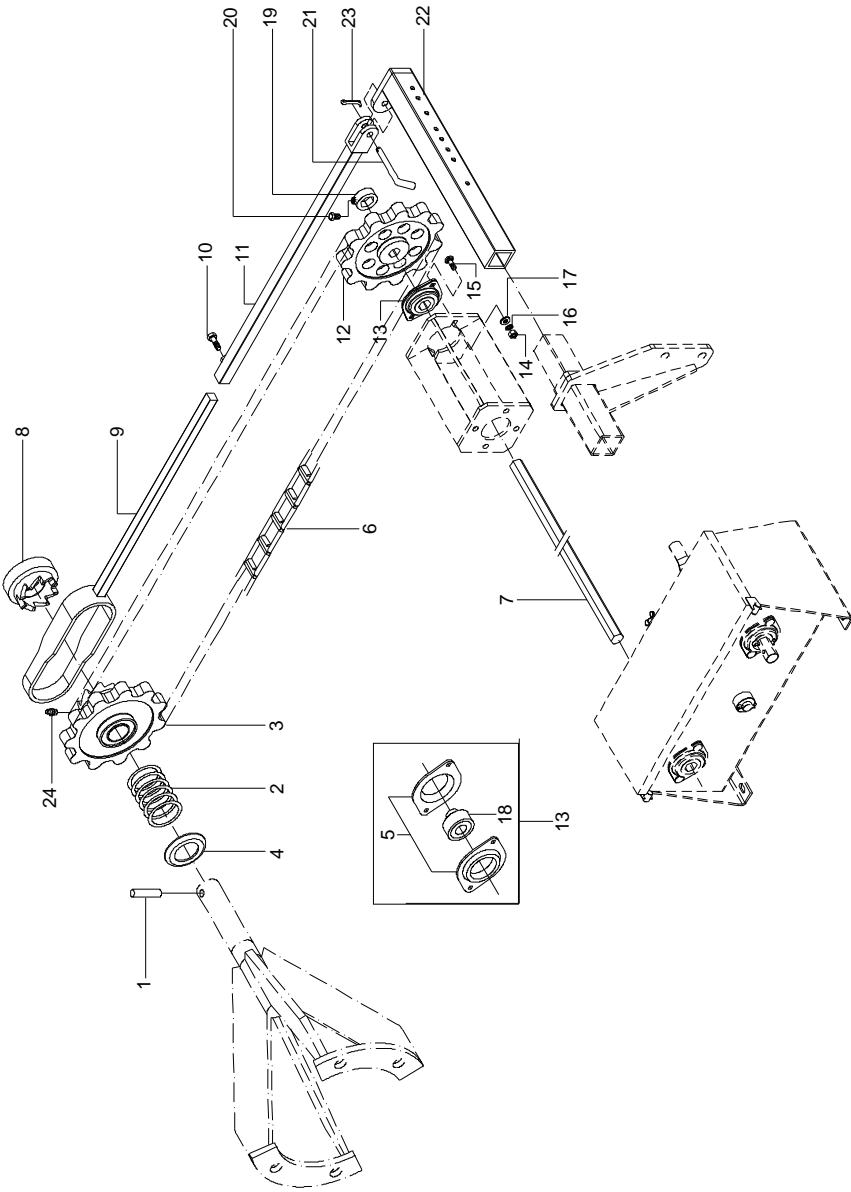


CAIXA DE TRANSMISSAO

REF	CODIGO	DESCRICAO
1	17.35.323	TAMPA CAIXA TRANSMISSAO
2	76.01.012	ROLESFA AUTOCOMPENSADOR FS-1.1/16
3	27.36.310	ENGRENAGEM DE TRANSMISSAO Z-24
4	27.38.330	ENGRENAGEM DE TRANSMISSAO Z-21
5	27.38.328	ENGRENAGEM DE TRANSMISSAO Z-19
6	75.02.023	PAR MANCAL FLANGETE OVALADO 72MST
7	27.30.332	TRAVA ELASTICA 27
8	83.01.115	CORRENTE ROLOSABNT 10AX83 ELOS
9	83.04.012	EMENDA TIPO 26 ABNT 10A-1
10	17.35.292	SUPORTE DIR ESTICADOR
11	17.35.296	CHAPA FIXACAO
12	70.11.354	PORCA SEXT MA10 DIN 934-5 ZN
13	70.17.026	CONTRAPINO 3/16" X 1"
14	70.18.008	ARRUELA LISA 3/8"
15	75.01.071	CONJ MANCAL C/ ROLAUTOCOM 1.1/16
16	70.07.555	PF FRANCES MA10X30 DIN 603-4.6 ZN
17	70.17.041	CONTRAPINO 1/4" X 1.1/2"
18	17.35.302	EIXO TRANSMISSAO 1.1/16"X344
19	17.35.289	CAIXA TRANSMISSAO
20	27.38.395	ENGRENAGEM Z-10
21	17.35.299	SUPORTE ESQ ESTICADOR
22	70.04.406	PF SEXT RT MA10X25 DIN 933-5.6 ZN
23	70.19.156	ARRUELA DE PRESSAO B10 DIN127 ZN
24	27.38.779	ENGRENAGEM DE TRANSMISSAO Z-30
25	27.38.332	ENGRENAGEM DE TRANSMISSAO Z-27
26	27.38.325	ENGRENAGEM DE TRANSMISSAO Z-15
27	70.11.514	PORCA BORBOLETA ESTAMPADA MA8
28	17.35.297	ALAVANCA DO ESTICADOR
29	70.25.002	PINO ELASTICO 6X20-DIN 1481
30	70.11.353	PORCA SEXT MA8 DIN 934-5 ZN
31	70.19.155	ARRUELA DE PRESSAO B8 DIN127 ZN
32	17.35.582	SUP DIR CAIXA TRANSMISSAO
33	17.35.583	SUP ESQ CAIXA TRANSMISSAO
34	70.04.695	PF SEXT RT MA12X30 DIN933-8.8
35	70.19.157	ARRUELA DE PRESSAO B12 DIN127 ZN
36	70.11.355	PORCA SEXT MA12 DIN 934-5 ZN
37	70.04.642	PF SEXT RT MA8X30 DIN 933-8.8 ZN
38	17.35.808	SUPORTE DA VALVULA

D - DIREITO

E - ESQUERDO

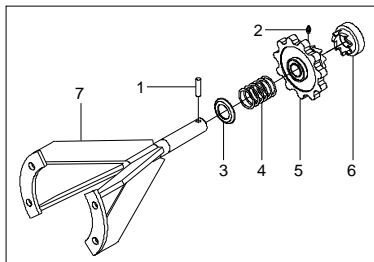


REF	CODIGO	DESCRICAO
1	17.35.440	PINO BATENTE
2	17.35.439	MOLA COMPRESSAO D5,0 D55 LO106
3	17.35.437	ENGRENAGEM ENGATE Z11
4	17.35.438	APOIO DA MOLA
5	75.02.023	PAR MANCAL FLANGETE OVALADO 72MST
6	17.35.807	CORRENTE MALHAS FUND N.57X68 ELOS
7	27.39.142	EIXO SEXTAVADO 1.1/16"X1985
8	17.35.433	BUCHA DESARME CATRACA
9	17.35.427	BRACO ESPACADOR
10	70.04.695	PF SEXT RT MA12X30 DIN933-8.8
11	17.35.431	ALAVANCA DESARME
12 *	04.17.081	ENGRENAGEM Z-7
A	04.17.082	ENGRENAGEM TRANSMISSAO Z-11
13	75.01.071	CONJ MANCAL C/ ROLAUTOCOM 1.1/16
14	70.11.354	PORCA SEXT MA10 DIN 934-5 ZN
15	70.07.555	PF FRANCES MA10X30 DIN 603-4.6 ZN
16	70.19.156	ARRUELA DE PRESSAO B10 DIN127 ZN
17	70.18.007	ARRUELA LISA 3/8"
18	76.01.012	ROLESFAUTOCOMPENSADOR FS-1.1/16
19	27.05.306	ANEL DE FIXACAO
20	70.04.665	PF SEXT RT MA10X25 DIN 933-8.8
21	27.04.323	PINO MAIOR DO ESTABILIZADOR
22	17.35.434	SUPORTE BRACO DESARME
23	70.17.026	CONTRAPINO 3/16" X 1"
24	93.05.005	GRAXEIRA RETA M8X1 DIN71412A

* - MONTAGEM PADRAO DA MAQUINA

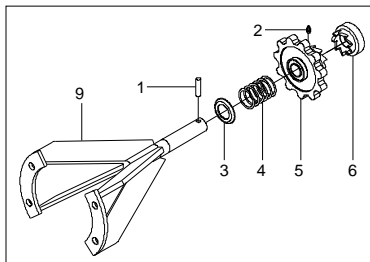
A - ACOMPANHA A MAQUINA

VALTRA 1280/1580 / NEW HOL 8630



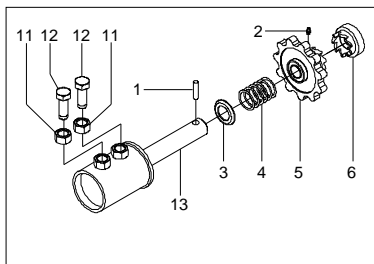
8

MASSEY FERGUNSON 650/660



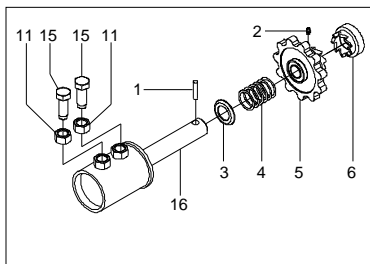
10

NEW HOL TM 135/150



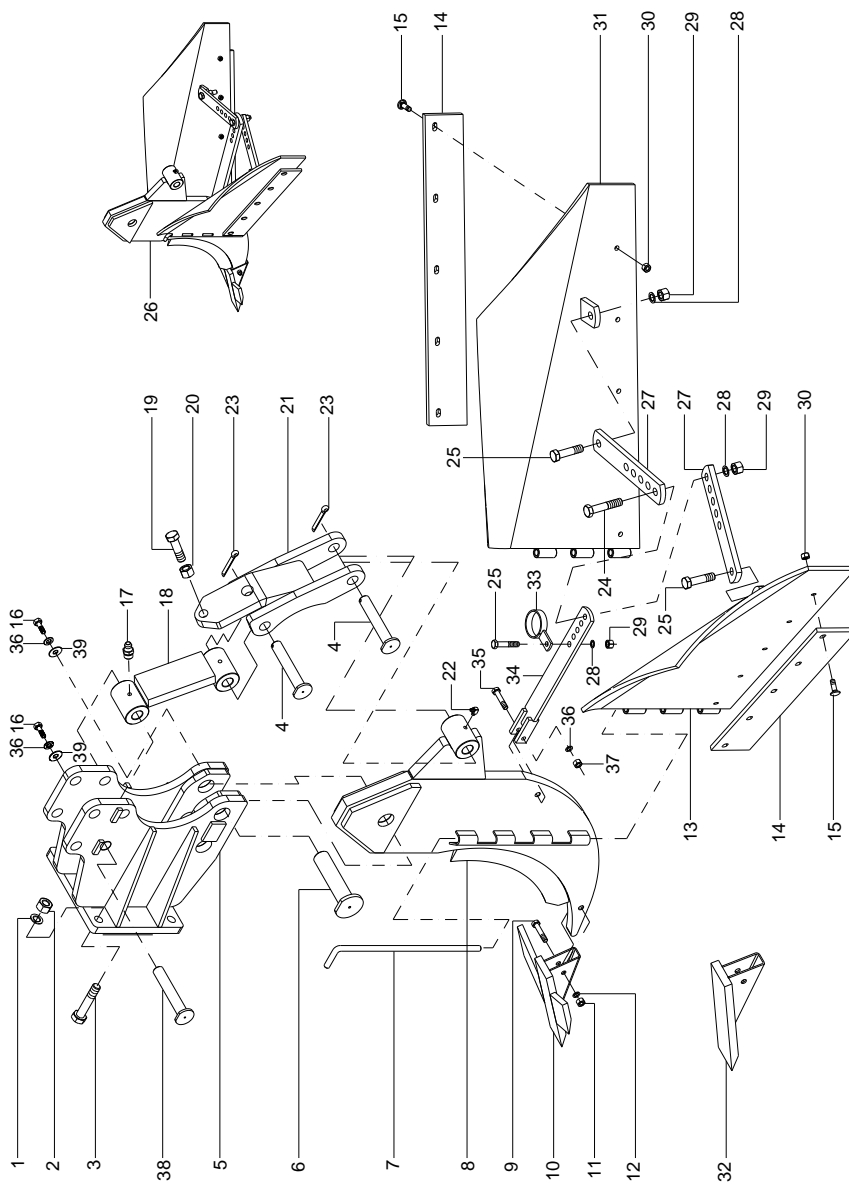
14

JOHN DEERE 6600/6605



17

REF	CODIGO	DESCRICAO
1	17.35.440	PINO BATENTE
2	93.05.005	GRAXEIRA RETA M8X1 DIN71412A
3	17.35.438	APOIO DA MOLA
4	17.35.439	MOLA COMPRESSAO D5,0 D55 LO106
5	17.35.437	ENGRENAGEM ENGATE Z11
6	17.35.433	BUCHA DESARME CATRACA
7	17.35.423	SUP CATRACA VALTRA 1280/1580
8	17.35.436	CONJ CATRACA VALTRA 1280/1580
9	17.35.796	SUPORTE CATRACA MF 650/660
10	17.35.795	CONJ CATRACA MF 650/660
11	70.11.360	PORCA SEXT MA24 DIN 934-5 ZN
12	17.35.743	PARAFUSO SUP CATRACA NEW HOLLAND
13	17.35.741	SUPORTE CATRACA NEW HOL TM135/150
14	17.35.742	CONJ CATRACA NEW HOL TM135/150
15	17.35.736	PARAFUSO SUP CATRACA JOHN DEERE
16	17.35.730	SUP CATRACA JOHN DEERE 6600/6605
17	17.35.735	CONJ CATRACA JOHN DEERE 6600/6605

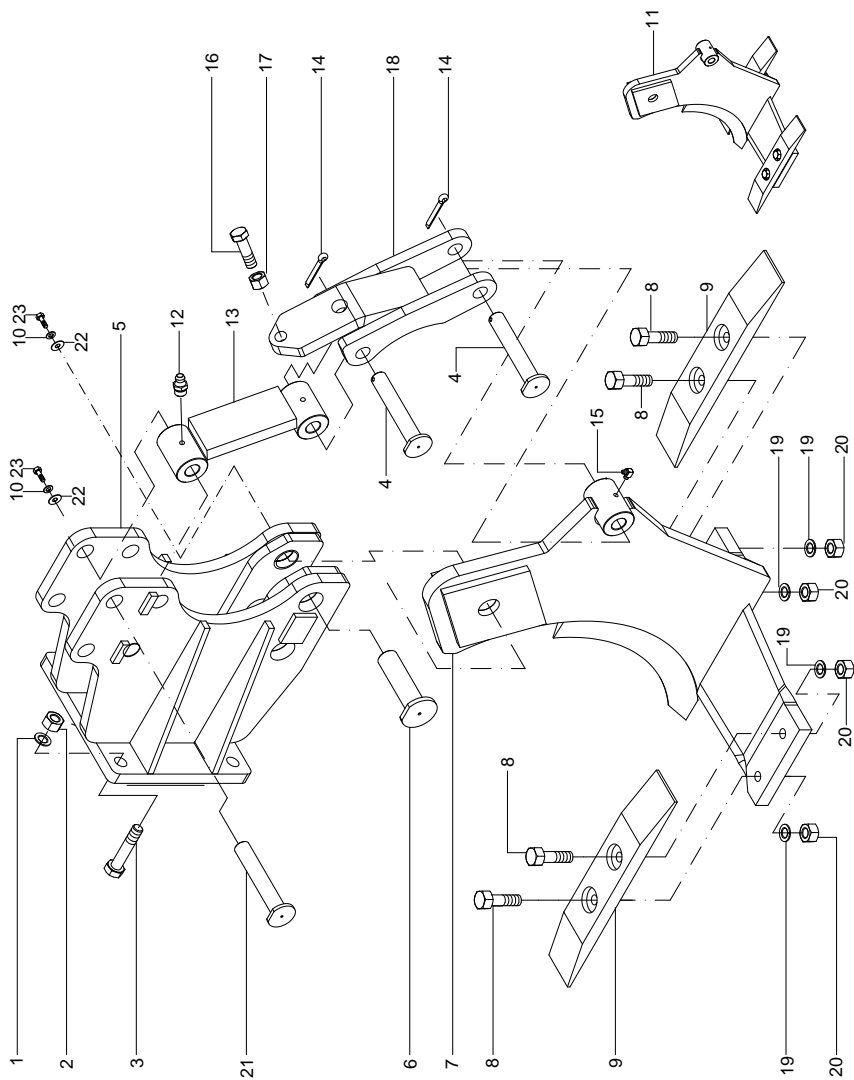


UNID SULCADORA ADUB HASTE ALADA

REF	CODIGO	DESCRICAO
1	70.19.160	ARRUELA DE PRESSAO B18 DIN127 ZN
2	70.11.357	PORCA SEXT MA18 DIN 934-5 ZN
3	70.04.729	PF SEXT RT MA18X60 DIN 933-8.8
4	17.35.373	PINO HASTE SULCADORA 1"X137
5	17.35.139	SUPORTE FERRAMENTAS
6	17.35.813	PINO FIXACAO 1.1/2"X122
7	17.35.368	PINO ARTICULACAO DA ASA
8	17.35.257	HASTE SULCADORA
9	70.04.251	PF SEXT RP MA10X50 DIN931-8.8
10	A 17.35.273	PONTEIRAALADA
11	70.11.354	PORCA SEXT MA10 DIN 934-5 ZN
12	70.19.156	ARRUELA DE PRESSAO B10 DIN127 ZN
13	17.35.268	ASA ESQ HASTE SULCADORA
14	17.35.271	CHAPA DE DESGASTE
15	70.07.555	PF FRANCES MA10X30 DIN 603-4.6 ZN
16	70.04.645	PF SEXT RT MA12X30 DIN933-8.8
17	93.05.005	GRAXEIRA RETA M8X1 DIN71412A
18	17.35.138	BRACO DESARME
19	17.35.231	PF SEXT REGULAGEM DESARME
20	70.11.358	PORCA SEXT MA20 DIN 934-5
21	17.35.135	SUPORTE DESARME
22	93.03.002	GRAXEIRA CURVA M8X1-90 DIN71412C
23	70.17.041	CONTRAPINO 1/4" X 1.1/2"
24	70.04.292	PF SEXT RP MA16X80 DIN931-8.8 ZN
25	70.04.289	PF SEXT RP MA16X65 DIN931-8.8 ZN
26	17.35.267	CONJ HASTE SULCADORA ALADA
27	17.35.325	CHAPA REGULADORA
28	70.19.159	ARRUELA DE PRESSAO B16 DIN127 ZN
29	70.11.356	PORCA SEXT MA16 DIN 934-5 ZN
30	70.11.354	PORCA SEXT MA10 DIN 934-5 ZN
31	17.35.269	ASA DIR HASTE SULCADORA
32	* 17.35.578	PONTEIRA RETA
33	17.35.360	SUPORTE MANGUEIRA SANFONADA
34	17.35.709	BARRA REGULAGEM
35	70.04.272	PF SEXT RP MA12X70 DIN931-8.8 ZN
36	70.19.157	ARRUELA DE PRESSAO B12 DIN127 ZN
37	70.11.355	PORCA SEXT MA12 DIN 934-5 ZN
38	17.35.810	PINO FIXACAO 1"X122
39	70.18.013	ARRUELA LISA 1/2"

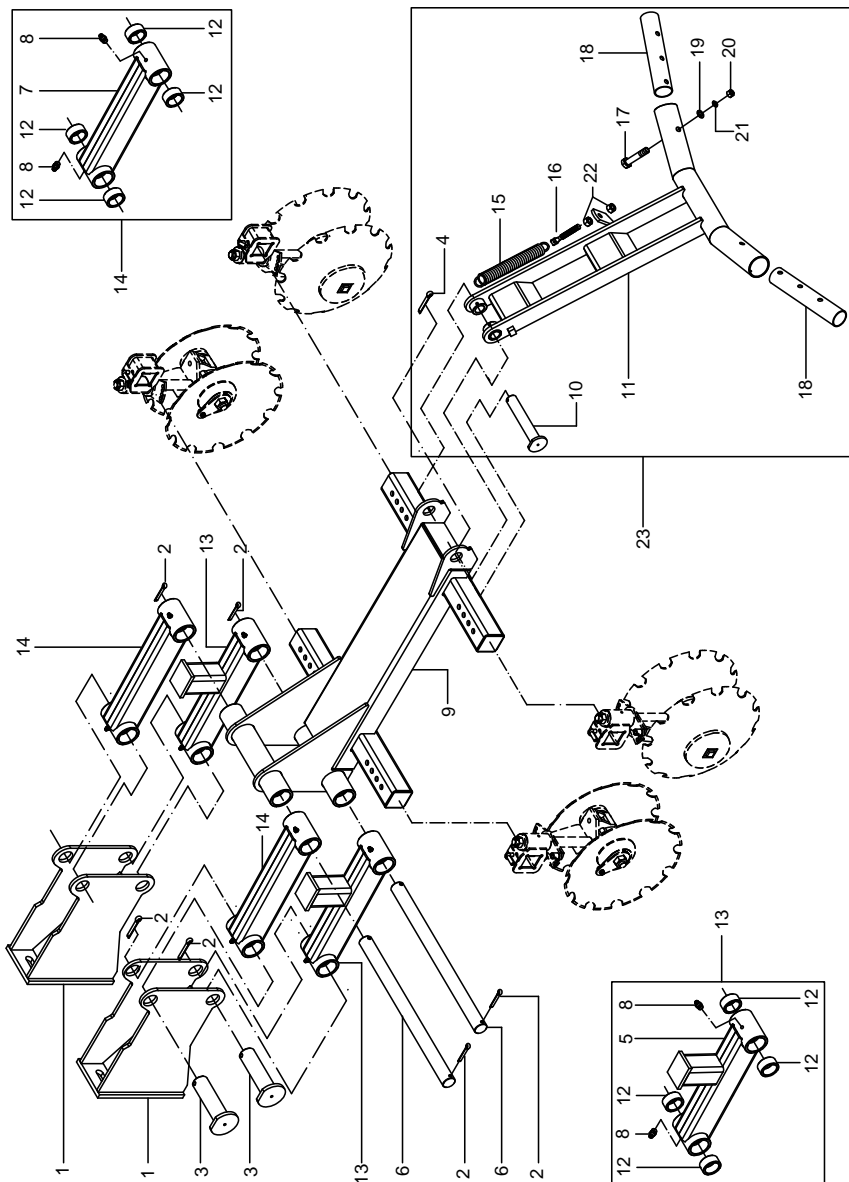
A - PONTEIRA PADRAO

* - PONTEIRA OPCIONAL



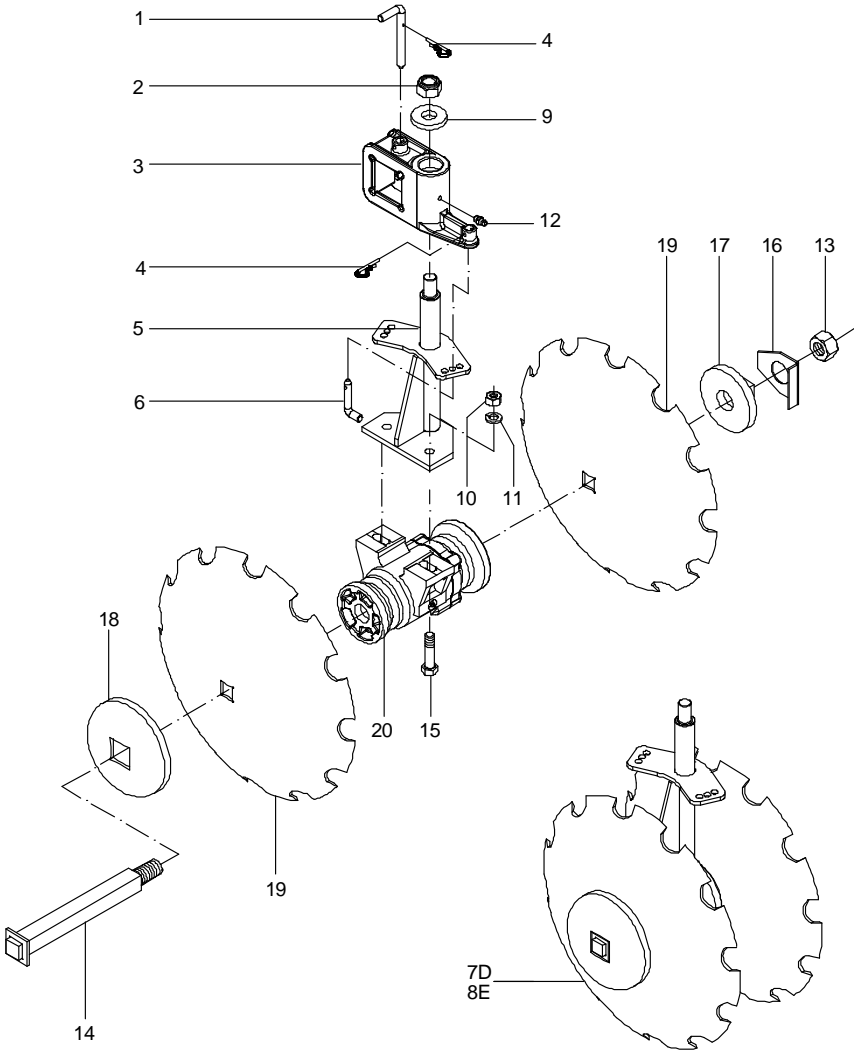
UNID SULCADORA ADUB HASTE "Y"

REF	CODIGO	DESCRICAO
1	70.19.160	ARRUELA DE PRESSAO B18 DIN127 ZN
2	70.11.357	PORCA SEXT MA18 DIN 934-5 ZN
3	70.04.729	PF SEXT RT MA18X60 DIN 933-8.8
4	17.35.373	PINO HASTE SULCADORA 1"X137
5	17.35.139	SUPORTE FERRAMENTAS
6	17.35.813	PINO FIXACAO 1.1/2X122
7	17.35.144	HASTE SUBSOLADORA Y
8	70.04.289	PF SEXT RP MA16X65 DIN931-8.8 ZN
9	17.35.150	PONTEIRA DUPLA
10	70.11.355	PORCA SEXT MA12 DIN 934-5 ZN
11	17.35.579	CONJ HASTE SUBSOLADORA "Y"
12	93.05.005	GRAXEIRA RETA M8X1 DIN71412A
13	17.35.138	BRACO DESARME
14	70.17.041	CONTRAPINO 1/4" X 1.1/2"
15	93.03.002	GRAXEIRA CURVA M8X1-90 DIN71412C
16	17.35.231	PF SEXT REGULAGEM DESARME
17	70.11.358	PORCA SEXT MA20 DIN 934-5
18	17.35.135	SUPORTE DESARME
19	70.19.159	ARRUELA DE PRESSAO B16 DIN127 ZN
20	70.11.356	PORCA SEXT MA16 DIN 934-5 ZN
21	17.35.810	PINO FIXACAO 1"X122
22	70.18.013	ARRUELA LISA 1/2"
23	70.04.695	PF SEXT RT MA12X30 DIN933-8.8

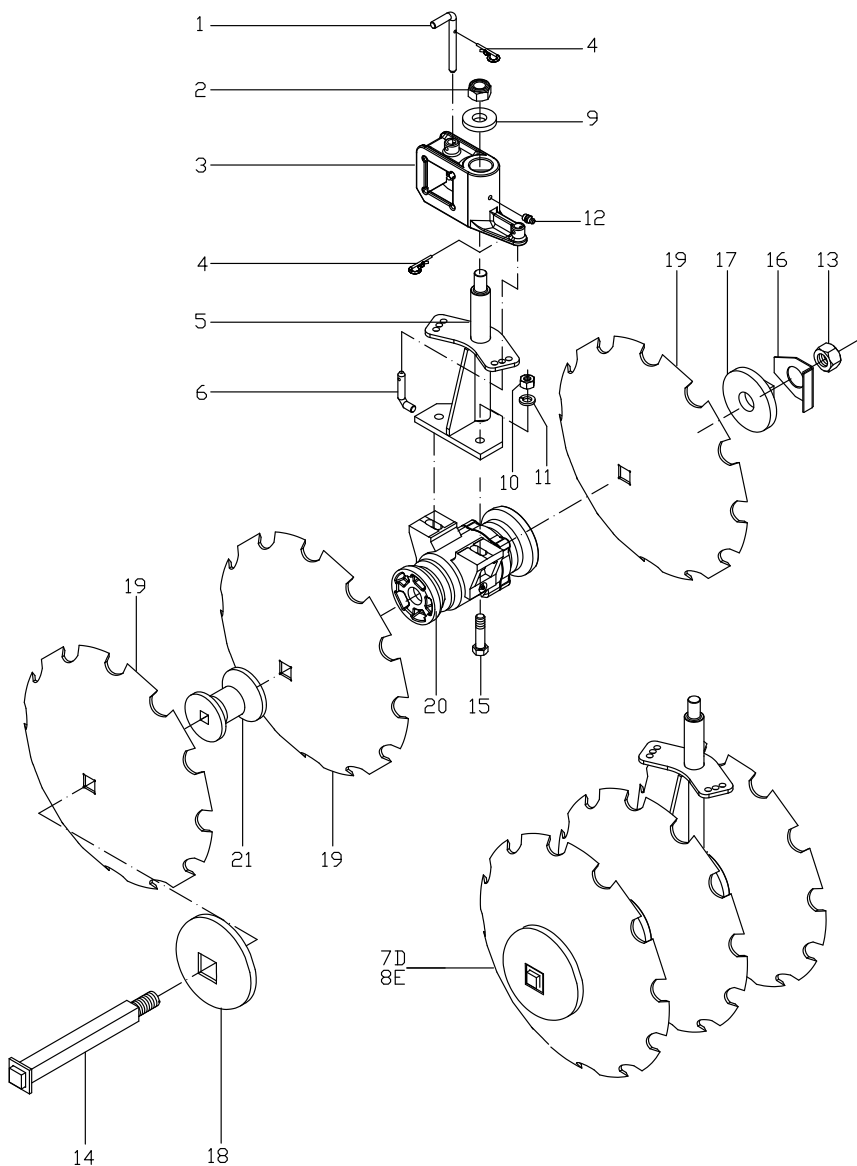


REF	CODIGO	DESCRICAO
1	17.35.614	SUP GRADE DESTORROADORA
2	70.17.057	CONTRAPINO 5/16" X 2"
3	17.35.370	PINO FIXACAO 1.1/2"X144
4	70.17.043	CONTRAPINO 1/4" X 2"
5	17.35.754	BRACO INFERIOR PANTOGRAFO
6	17.35.414	EIXO PANTOGRAFO
7	17.35.753	BRACO SUPERIOR PANTOGRAFO
8	93.05.005	GRAXEIRA RETA M8X1 DIN71412A
9	17.35.546	SUP GRADE DESTORROADORA
10	17.35.554	PINO FIXACAO
11	17.35.541	NIVELADOR
12	17.35.195	BUCHA GUIA
13	17.35.772	BRACO INFERIOR PANTOGRAFO
14	17.35.771	BRACO SUPERIOR PANTOGRAFO
15	17.35.723	MOLA
16	17.35.724	FIXADOR MOLA
17	70.04.278	PF SEXT RP MA12X100 DIN931-8.8 ZN
18	17.35.715	TUBO NIVELADOR
19	70.18.013	ARRUELA LISA 1/2"
20	70.11.355	PORCA SEXT MA12 DIN 934-5 ZN
21	70.19.157	ARRUELA DE PRESSAO B12 DIN127 ZN
22	70.11.356	PORCA SEXT MA16 DIN 934-5 ZN
23 *	17.35.806	CONJ NIVELADOR

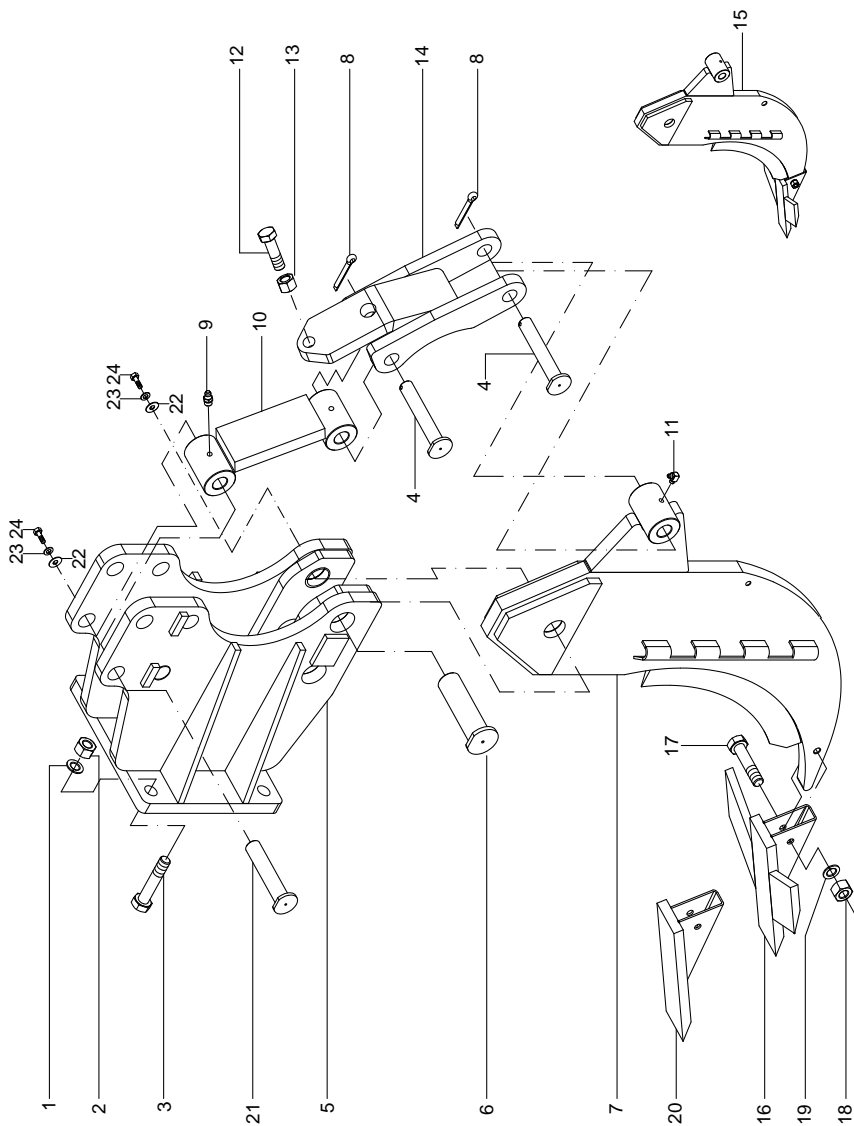
* - OPCIONAL



REF	CODIGO	DESCRICAO
1	17.35.537	PINO DE FIXACAO
2	70.14.041	PORCA INSERTO NYLON MB24 DIN985-6
3	17.35.713	SUPORTE DO MANCAL
4	70.16.010	TRAVA DE ACO 5/32"X69
5	17.35.711	SUPORTE MANCAL
6	17.35.536	PINO TRAVA
7	17.35.580	CONJ DISCO GRADE DIR 18"REC DUPLO
8	17.35.581	CONJ DISCO GRADE ESQ 18"REC DUPLO
9	51.01.474	ARRUELA DE ENCOSTO
10	70.11.356	PORCA SEXT MA16 DIN 934-5 ZN
11	70.19.159	ARRUELA DE PRESSAO B16 DIN127 ZN
12	93.05.005	GRAXEIRA RETA M8X1 DIN71412A
13	70.11.389	PORCA SEXT MB24 DIN934-5 ZN
14	17.35.162	EIXO GRADE DESTERROADORA
15	70.04.718	PF SEXT RT MA16X50 DIN933-8.8 ZN
16	17.35.509	TRAVA
17	17.35.632	ENCOSTO INTERNO DISCO - F1"
18	17.35.633	ENCOSTO EXTERNO DISCO - F1"
19	99.01.025	DISCO CONCAVO RECORTADO 18"
20	17.35.631	CONJ MANCAL ROL OLEO C185/F1"



REF	CODIGO	DESCRICAO
1	17.35.537	PINO DE FIXACAO
2	70.14.041	PORCA INSERTO NYLON MB24 DIN985-6
3	17.35.713	SUPORTE DO MANCAL
4	70.16.010	TRAVA DE ACO 5/32"X69
5	17.35.711	SUPORTE MANCAL
6	17.35.536	PINO TRAVA
7	17.37.243	CONJ DISCO GRADE DIR 18REC TRIPLO
8	17.37.244	CONJ DISCO GRADE ESQ 18REC TRIPLO
9	51.01.474	ARRUELA DE ENCOSTO
10	70.11.356	PORCA SEXT MA16 DIN 934-5 ZN
11	70.19.159	ARRUELA DE PRESSAO B16 DIN127 ZN
12	93.05.005	GRAXEIRA RETA M8X1 DIN71412A
13	70.11.389	PORCA SEXT MB24 DIN 934-5 ZN
14	17.35.643	EIXO GRADE DESTERROADORA
15	70.04.718	PF SEXT RT MA16X50 DIN933-8.8 ZN
16	17.35.509	TRAVA
17	17.35.632	ENCOSTO INTERNO DISCO - F1"
18	17.35.633	ENCOSTO EXTERNO DISCO - F1"
19	99.01.025	DISCO CONCAVO RECORTADO 18"
20	17.35.631	CONJ MANCAL ROL OLEO C185/F1"
21	17.35.703	SEPARADOR DE DISCO C145/F1"

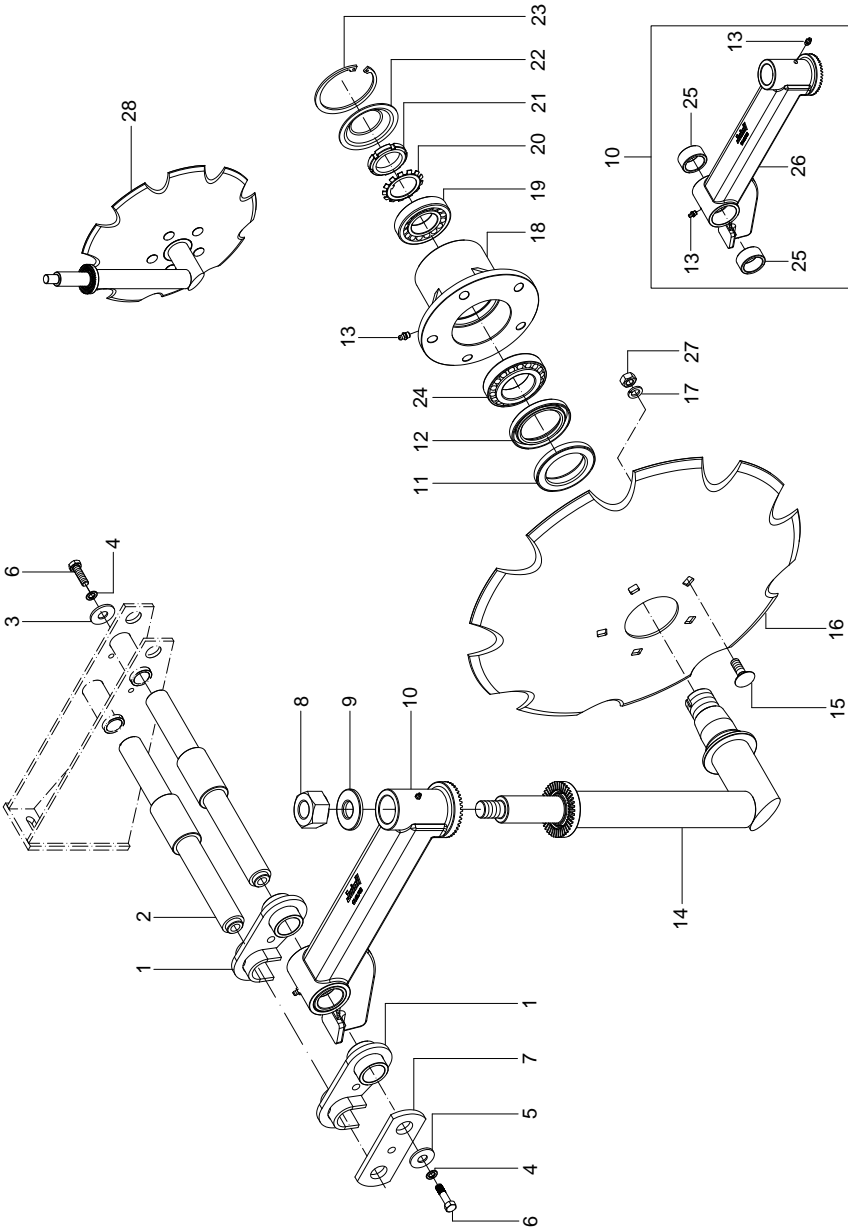


UNID SULCADORA ADUB HASTE SIMPLES

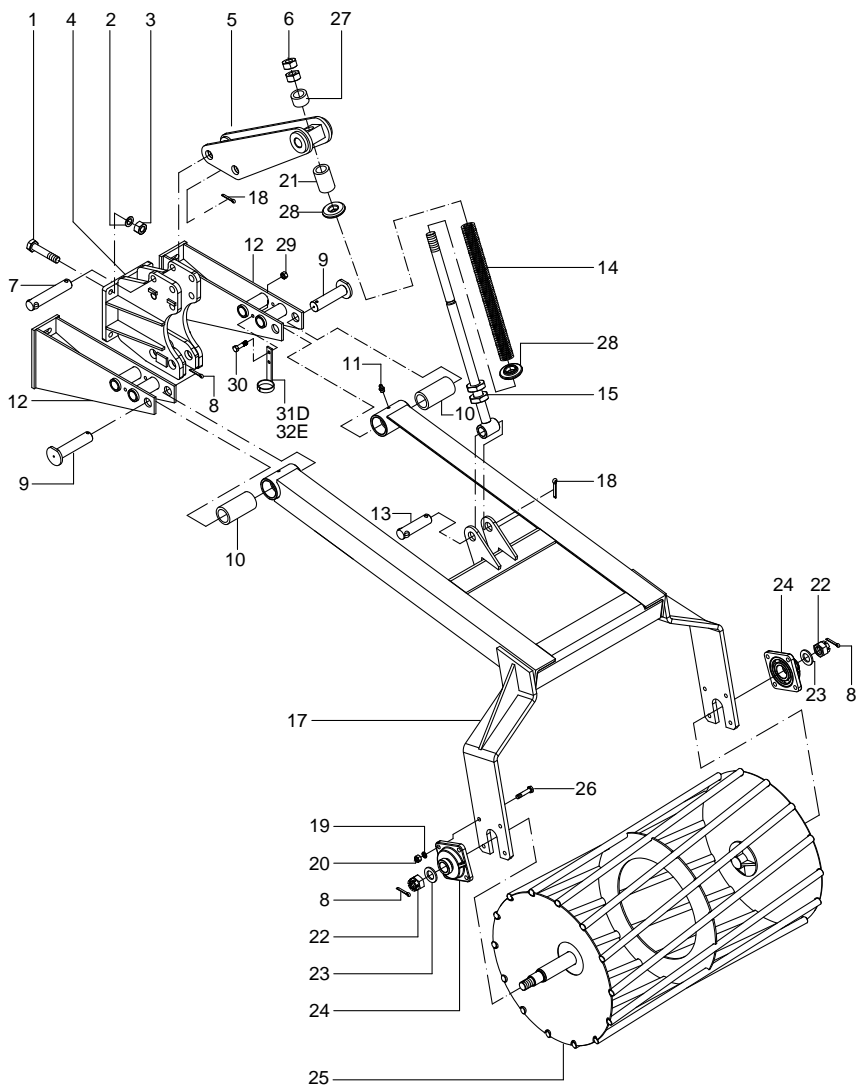
REF	CODIGO	DESCRICAO
1	70.19.160	ARRUELA DE PRESSAO B18 DIN127 ZN
2	70.11.357	PORCA SEXT MA18 DIN 934-5 ZN
3	70.04.729	PF SEXT RT MA18X60 DIN 933-8.8
4	17.35.373	PINO HASTE SULCADORA 1"X137
5	17.35.139	SUPORTE FERRAMENTAS
6	17.35.813	PINO FIXACAO 1.1/2"X122
7	17.35.257	HASTE SULCADORA
8	70.17.041	CONTRAPINO 1/4" X 1.1/2"
9	93.05.005	GRAXEIRA RETA M8X1 DIN71412A
10	17.35.138	BRACO DESARME
11	93.03.002	GRAXEIRA CURVA M8X1-90 DIN71412C
12	17.35.231	PF SEXT REGULAGEM DESARME
13	70.11.358	PORCA SEXT MA20 DIN 934-5
14	17.35.135	SUPORTE DESARME
15	17.35.286	CONJ HASTE SUBSOLADORA SIMPLES
16 A	17.35.273	PONTEIRAALADA
17	70.04.251	PF SEXT RP MA10X50 DIN931-8.8
18	70.11.354	PORCA SEXT MA10 DIN 934-5 ZN
19	70.19.156	ARRUELA DE PRESSAO B10 DIN127 ZN
20 *	17.35.578	PONTEIRARETA
21	17.35.810	PINO FIXACAO 1"X122
22	70.18.013	ARRUELA LISA 1/2"
23	70.11.355	PORCA SEXT MA12 DIN 934-5 ZN
24	70.04.695	PF SEXT RT MA12X30 DIN933-8.8

A - PONTEIRA PADRAO

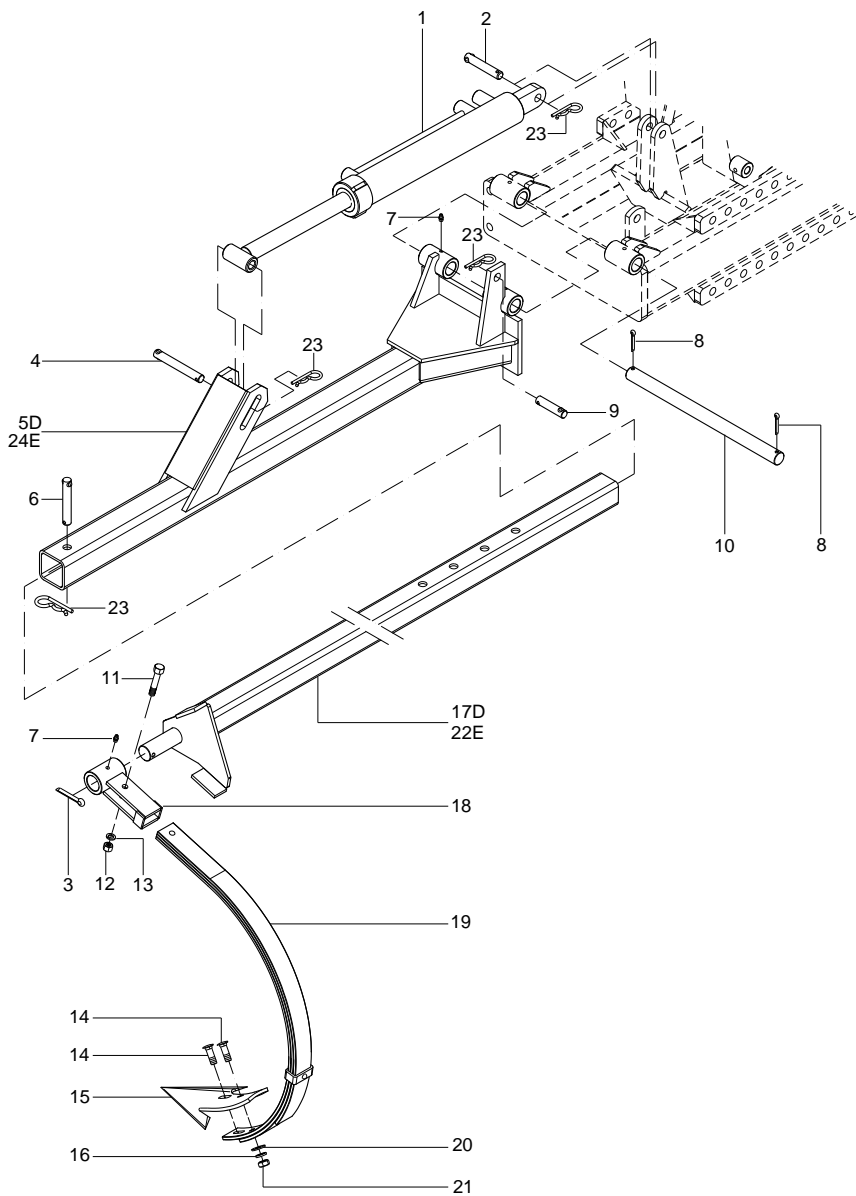
* - PONTEIRA OPCIONAL



REF	CODIGO	DESCRICAO
1	04.17.076	BRACO ESPACADOR
2	17.35.599	EIXO REG DISCO COBRIDOR
3	27.18.685	ARRUELA DE ENCOSTO
4	70.19.159	ARRUELA DE PRESSAO B16 DIN127 ZN
5	27.18.887	ARRUELA LISA
6	70.04.717	PF SEXT RT MA16X40 DIN 933-8.8 ZN
7	17.35.598	CHAPA FIXACAO
8	70.14.039	PORCA INSERTO NYLON MB20 DIN985-6
9	51.01.474	ARRUELA DE ENCOSTO
10	17.35.773	BRACO DISCO COBRIDOR
11	17.35.788	BUCHA FLANGEADA 5060-20
12	81.01.005	RETENTOR 60,0X90,0X10,0 00517-BR
13	93.05.005	GRAXEIRA RETA M8X1 DIN71412A
14	17.35.789	HASTE DISCO COBRIDOR
15	70.07.728	PF FRANCES MA12X35 DIN 603-8.8
16	99.01.074	DISCO CONCAVO COM RECORTES 20"
17	70.19.157	ARRUELA DE PRESSAO B12 DIN127 ZN
18	17.35.785	MANCAL DO DISCO
19	73.04.253	ROLAMENTO ROLOS CONICOS 30208
20	70.28.002	ARRUELA DE TRAVA MB8 DIN5406
21	27.18.728	PORCA DE FIXACAO
22	17.35.787	TAMPA DE PROTECAO
23	71.04.006	ANEL RETENCAO 90X3,00-DIN 472
24	73.04.254	ROLAMENTO ROLOS CONICOS 30210
25	17.35.195	BUCHA GUIA
26	17.35.755	BRACO DISCO COBRIDOR
27	70.11.355	PORCA SEXT MA12 DIN 934-5 ZN
28	17.35.790	CONJ DISCO COBRIDOR 20" REC

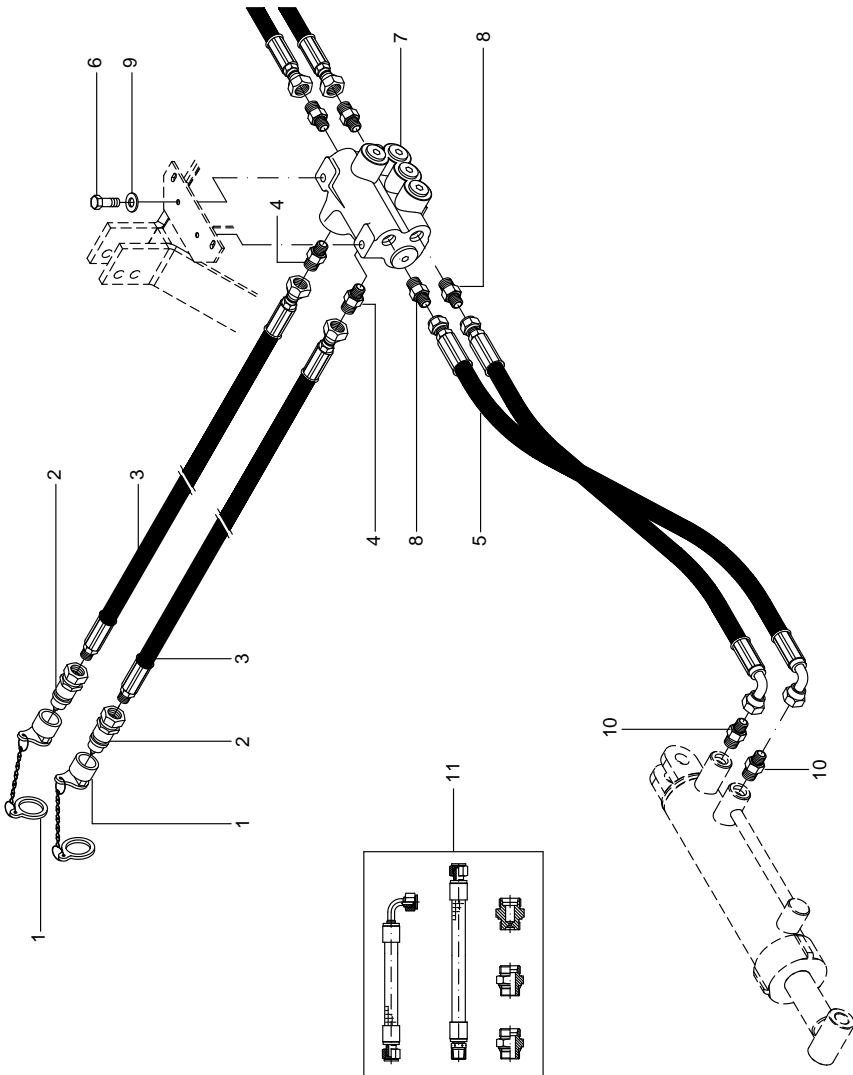


REF	CODIGO	DESCRICAO
1	70.04.729	PF SEXT RT MA18X60 DIN 933-8.8
2	70.19.160	ARRUELA DE PRESSAO B18 DIN127 ZN
3	70.11.357	PORCA SEXT MA18 DIN 934-5 ZN
4	17.35.139	SUPORTE FERRAMENTAS
5	17.35.201	BRACO SUPORTE MOLA
6	70.11.360	PORCA SEXT MA24 DIN 934-5 ZN
7	37.19.173	PINO REMACHADO 1"X190MM
8	70.17.006	CONTRAPINO 1/8" X 2"
9	17.35.370	PINO FIXACAO 1.1/2"X121
10	17.35.195	BUCHA GUIA
11	93.05.005	GRAXEIRA RETAM8X1 DIN71412A
12	17.35.453	SUPORTE DISCO COBRIDOR
13	50.01.038	PINO DE ENGATE
14	27.38.446	MOLA COMPRESSAO D11,0 DI40,0LO222
15	17.35.205	HASTE REGULADORA
16	70.16.010	TRAVA DE ACO 5/32"X69
17	17.35.486	CONJ SUP ROLO DESTORROADOR
18	70.17.026	CONTRAPINO 3/16" X 1"
19	70.19.156	ARRUELA DE PRESSAO B10 DIN127 ZN
20	70.11.354	PORCA SEXT MA10 DIN 934-5 ZN
21	21.04.016	BUCHA ESPACADORA
22	70.12.548	PORCA CASTELO MB24 DIN 935-5
23	70.18.244	ARRUELA LISA A25,00 DIN125-ZN
24	75.01.033	CONJ MANCAL FLANGEADO QUAD PCJ 30
25	17.35.156	ROLO DESTORROADOR
26	70.04.669	PF SEXT RT MA10X40 DIN 933-8.8
27	27.31.410	BUCHA ESPACADORA
28	04.17.088	APOIO DA MOLA
29	70.14.205	PORCA AUTOTRAVANTE MA12 DIN 980-8
30	70.04.408	PF SEXT RT MA10X30 DIN 933-5.6 ZN
31	17.35.636	SUP MANGUEIRA DIR
32	17.35.637	SUP MANGUEIRA ESQ

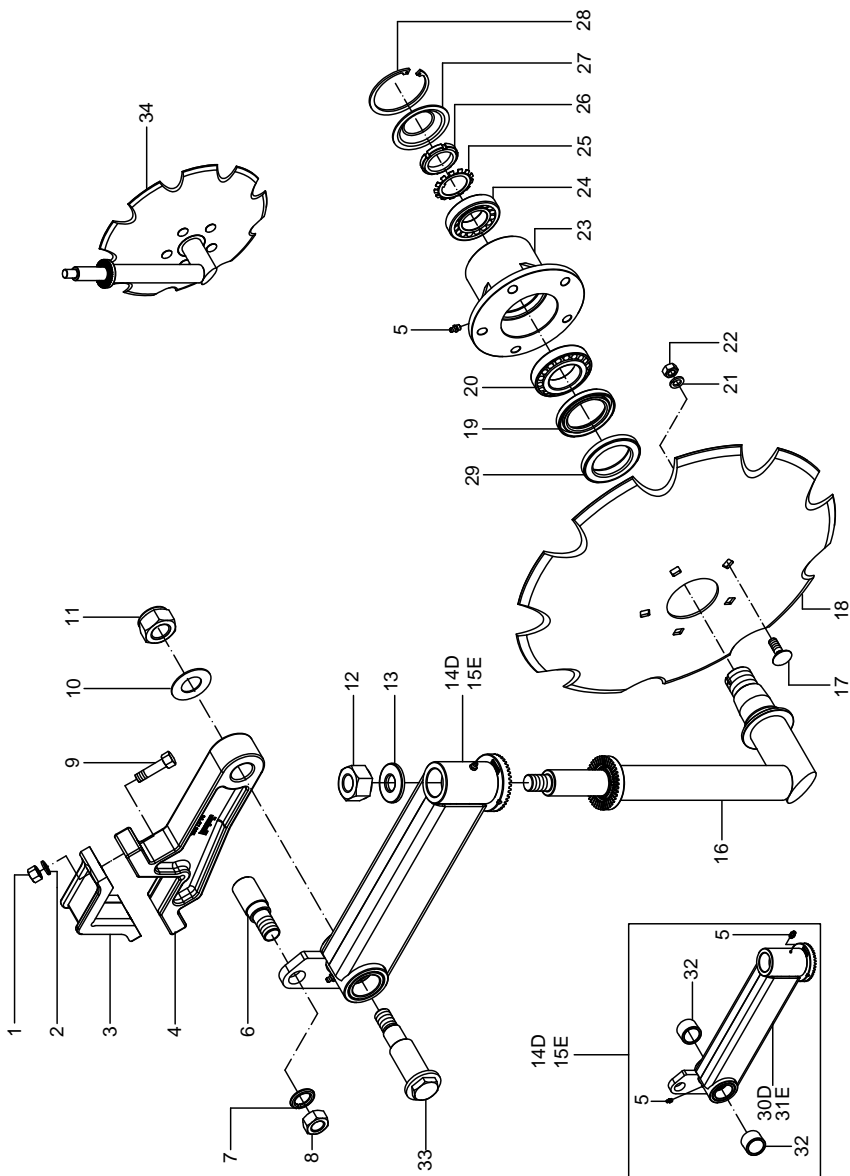


MARCADOR DE BANQUETA

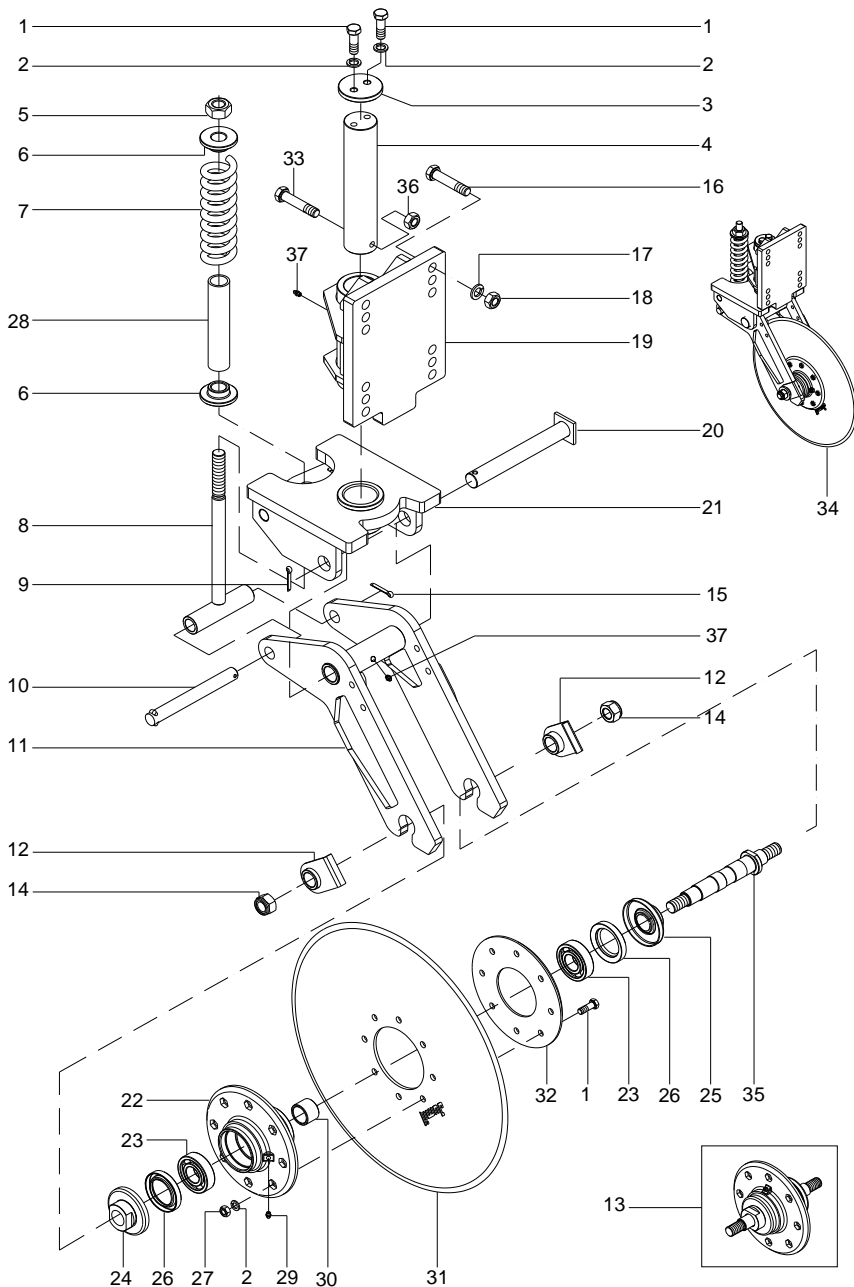
REF	CODIGO	DESCRICAO
1	17.35.474	CILINDRO HIDR 2.1/2"X1.1/2"-390
2	27.28.269	PINO REMANCHADO 3/4"X72
3	70.17.063	CONTRAPINO 3/16" X 2"
4	27.27.144	PINO REMANCHADO 3/4"X145MM
5	17.35.568	BRACO MARC LINHA DIR
6	50.04.055	PINO REMANCHADO 3/4X115
7	93.05.005	GRAXEIRA RETA M8X1 DIN71412A
8	70.17.025	CONTRAPINO 3/16" X 1.1/2"
9	27.04.323	PINO MAIOR DO ESTABILIZADOR
10	17.35.367	EIXO ARTICULACAO
11	70.04.701	PF SEXT RT MA12X60 DIN 933-8.8
12	70.11.355	PORCA SEXT MA12 DIN 934-5 ZN
13	70.19.157	ARRUELA DE PRESSAO B12 DIN127 ZN
14	70.08.107	PF DE ARADO RP 7/16UNCX1.3/4-G2
15	10.01.416	ENXADA SULCADORA 8"
16	70.19.006	ARRUELA PRESSAO 7/16-MEDIA
17	17.35.403	BRACO DIR MARCADOR BANQUETA
18	17.35.408	FIXADOR FEIXE DE MOLAS
19	10.01.417	FEIXE DE MOLAS
20	70.18.013	ARRUELA LISA 1/2"
21	70.11.104	PORCA SEXT NORMAL 7/16UNC-G2
22	17.35.411	BRACO ESQ MARCADOR BANQUETA
23	70.16.010	TRAVA DE ACO 5/32"X69
24	17.35.573	BRACO MARC LINHA ESQ



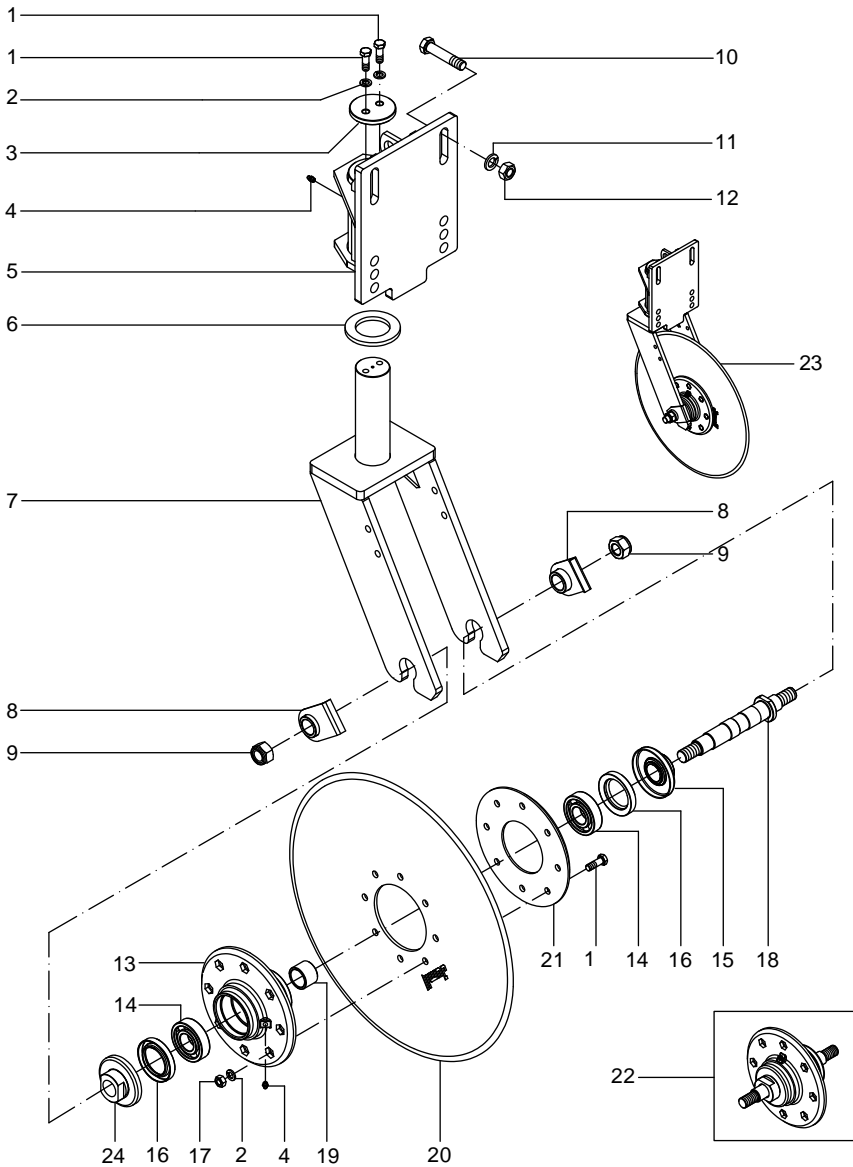
REF	CODIGO	DESCRICAO
1	92.02.102	PROTETOR FEMEA BIT-8
2	92.02.005	ENGATE RAPIDO MACHO 1/2NPT X 30
3	92.12.017	FH NPT/DKO 1/2NPTFXM1/2XM22X3500
4	92.05.161	UNIAO MACHO 15LX3/4"UNF+O ST
5	92.12.193	FH DKO M18XM3/8XM18X1200
6	70.04.383	PF SEXT RT MA8X30 DIN 933-5.6 ZN
7	92.01.021	VALVULA DIVISORA FLUXO - VENTURI
8	92.05.158	UNIAO MACHO 12LX9/16"UNF+O ST
9	70.18.004	ARRUELA LISA 5/16"
10	17.35.153	REDUTOR VAZAO 12LX3/4"UNF-F2,3
11	92.11.040	KIT FH DKO MARC LINHA JM3520SH



REF	CODIGO	DESCRICAO
1	70.11.356	PORCA SEXT MA16 DIN 934-5 ZN
2	70.19.159	ARRUELA DE PRESSAO B16 DIN127 ZN
3	04.27.398	BRACADEIRA
4	04.17.095	BRACO DISCO MARCADOR SULCO
5	93.05.005	GRAXEIRA RETA M8X1 DIN71412A
6	17.35.357	REGULADOR DO BRACO
7	70.19.160	ARRUELA DE PRESSAO B18 DIN127 ZN
8	70.11.357	PORCA SEXT MA18 DIN 934-5 ZN
9	70.04.291	PF SEXT RP MA16X75 DIN931-8.8
10	70.18.076	ARRUELA LISA 1"
11	70.14.021	PORCA INSERTO NYLON MA24 DIN985-6
12	70.14.039	PORCA INSERTO NYLON MB20 DIN985-6
13	51.01.474	ARRUELA DE ENCOSTO
14	17.35.692	BRACO DIREITO DISCO COBRIDOR
15	17.35.693	BRACO ESQUERDO DISCO COBRIDOR
16	17.35.789	HASTE DISCO COBRIDOR
17	70.07.728	PF FRANCES MA12X35 DIN 603-8.8
18	99.01.074	DISCO CONCAVO COM RECORTES 20"
19	81.01.005	RETENTOR 60,0X90,0X10,0 00517-BR
20	73.04.254	ROLAMENTO ROLOS CONICOS 30210
21	70.19.157	ARRUELA DE PRESSAO B12 DIN127 ZN
22	70.11.355	PORCA SEXT MA12 DIN 934-5 ZN
23	17.35.785	MANCAL DO DISCO
24	73.04.253	ROLAMENTO ROLOS CONICOS 30208
25	70.28.002	ARRUELA DE TRAVA MB8 DIN5406
26	27.18.728	PORCA DE FIXACAO
27	17.35.787	TAMPA DE PROTECAO
28	71.04.006	ANEL RETENCAO 90X3,00-DIN 472
29	17.35.788	BUCHA FLANGEADA 5060-20
30	17.35.355	BRACO DIREITO DISCO COBRIDOR
31	17.35.193	BRACO ESQUERDO DISCO COBRIDOR
32	17.35.195	BUCHA GUIA
33	17.35.604	EIXO PIVOT
34	17.35.790	CONJ DISCO COBRIDOR 20" REC



REF	CODIGO	DESCRICAO
1	70.04.696	PF SEXT RT MA12X35 DIN 933-8.8
2	70.19.157	ARRUELA DE PRESSAO B12 DIN127 ZN
3	17.35.124	ARRUELA DE FIXACAO
4	17.35.117	EIXO DISCO DE CORTE
5	70.11.360	PORCA SEXT MA24 DIN 934-5 ZN
6	04.50.011	APOIO DA MOLA
7	27.18.272	MOLA COMPRESSAO D13,5 DI43,0LO230
8	17.35.125	HASTE REGULADORA
9	70.17.041	CONTRAPINO 1/4" X 1.1/2"
10	17.35.127	PINO REMANCHADO 1"X220
11	17.35.760	BRACO DISCO DE CORTE
12	17.35.131	TRAVA DO EIXO
13	17.35.419	CONJ MANCAL DISCO DE CORTE
14	70.14.041	PORCA INSERTO NYLON MB24 DIN985-6
15	70.17.055	CONTRAPINO 5/16" X 1"
16	70.04.729	PF SEXT RT MA18X60 DIN 933-8.8
17	70.19.160	ARRUELA DE PRESSAO B18 DIN127 ZN
18	70.11.357	PORCA SEXT MA18 DIN 934-5 ZN
19	17.35.119	SUPORTE DISCO DE CORTE
20	17.35.128	EIXO DE FIXACAO 1.1/4"X232
21	17.35.757	SUPORTE DISCO DE CORTE
22	17.35.093	MANCAL
23	73.01.215	ROLAMENTO FIXO ESF 6307
24	17.35.115	GUARDA PO
25	17.35.421	GUARDA PO
26	81.01.091	RETENTOR 55,0X85,5X13,0 01180-BR
27	70.11.355	PORCA SEXT MA12 DIN 934-5 ZN
28	27.18.273	TUBO LIMITADOR
29	93.05.005	GRAXEIRA RETAM8X1 DIN71412A
30	17.35.422	BUCHA GUIA
31	99.01.075	DISCO PLANO 24"
32	04.17.085	FLANGE DE ENCOSTO
33	70.04.278	PF SEXT RP MA12X100 DIN931-8.8 ZN
34	17.35.762	CONJ DISCO CORTE LISO 24"
35	17.35.099	EIXO DISCO CORTE
36	70.14.015	PORCA INSERTO NYLON MA12 DIN985-6
37	93.05.005	GRAXEIRA RETAM8X1 DIN71412A



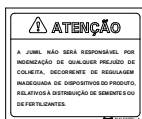
REF	CODIGO	DESCRICAO
1	70.04.696	PF SEXT RT MA12X35 DIN 933-8.8
2	70.19.157	ARRUELA DE PRESSAO B12 DIN127 ZN
3	17.35.124	ARRUELA DE FIXACAO
4	93.05.005	GRAXEIRA RETA M8X1 DIN71412A
5	17.35.119	SUPORTE DISCO DE CORTE
6	17.35.750	ARRUELA DE ENCOSTO
7	17.35.748	SUPORTE DISCO CORTE FIXO
8	17.35.131	TRAVADO EIXO
9	70.14.041	PORCA INSERTO NYLON MB24 DIN985-6
10	70.04.729	PF SEXT RT MA18X60 DIN 933-8.8
11	70.19.160	ARRUELA DE PRESSAO B18 DIN127 ZN
12	70.11.357	PORCA SEXT MA18 DIN 934-5 ZN
13	17.35.093	MANCAL
14	73.01.215	ROLAMENTO FIXO ESF 6307
15	17.35.421	GUARDA PO
16	81.01.091	RETENTOR 55,0X85,5X13,0 01180-BR
17	70.11.355	PORCA SEXT MA12 DIN 934-5 ZN
18	17.35.099	EIXO DISCO CORTE
19	17.35.422	BUCHA GUIA
20	99.01.075	DISCO PLANO 24"
21	04.17.085	FLANGE DE ENCOSTO
22	17.35.419	CONJ MANCAL DISCO DE CORTE
23	17.35.751	CONJ DISCO CORTE FIXO LISO 24"
24	17.35.115	GUARDA PO



1



2



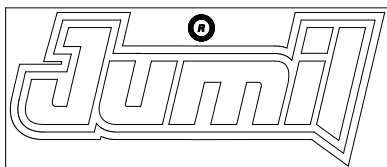
3



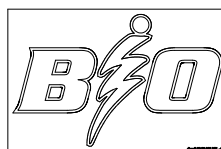
4



5



6



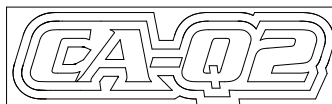
7



8



9



10



11

KIT COLANTE JM3520

REF	CODIGO	DESCRICAO
1	89.01.320	COLANTE AT MARCADOR LINHA-PORT
2	89.01.596	COLANTE AT TRANSP PESSOAS-PORT
3	89.01.719	COLANTE AT REGUL INADEQUADA-POR
4	89.01.399	COLANTE MADE IN BRAZIL
5	89.01.307	COLANTE LER MANUAL DE INSTRUcoes
6	89.01.798	COLANTE PRETO E VERMELHO JUMIL
7	89.01.800	COLANTE VERDE E AMARELO BIO
8	89.01.803	COLANTE VERMELHO E PRETO JM3520SH
9	89.01.804	COLANTE VERMELHO E PRETO CA-C/Q2
10	89.01.810	COLANTE VERMELHO E PRETO CA-Q2
11	89.01.805	COLANTE VERMELHO E PRETO SA2
12	89.18.004	KIT COLANTE JM3520SH CA-C/Q2-POR
13	89.18.005	KIT COLANTE JM3520SH CA-Q2-POR
14	89.18.006	KIT COLANTE JM3520SH SA2-POR

* - OS ITENS 12 AO 14 SAO OS CODIGOS DOS KITS COM TODOS OS COLANTES

CODIGO	REF.	PAG.
04.17.076	01	31
04.17.081	12	15
04.17.082	12	15
04.17.085	32	41
04.17.085	21	43
04.17.088	28	33
04.17.095	04	39
04.27.398	03	39
04.50.011	06	41
10.01.416	15	35
10.01.417	19	35
11.03.569	22	07
17.32.208	08	05
17.35.050	07	05
17.35.080	02	05
17.35.091	24	09
17.35.092	18	09
17.35.093	22	41
17.35.093	13	43
17.35.099	35	41
17.35.099	18	43
17.35.115	24	41
17.35.115	24	43
17.35.117	04	41
17.35.119	19	41
17.35.119	05	43
17.35.124	03	41
17.35.124	03	43
17.35.125	08	41
17.35.127	10	41
17.35.128	20	41
17.35.131	12	41
17.35.131	08	43
17.35.135	21	19
17.35.135	18	21
17.35.135	14	29
17.35.136	12	07
17.35.138	18	19
17.35.138	13	21
17.35.138	10	29
17.35.139	05	19
17.35.139	05	21
17.35.139	05	29
17.35.139	04	33
17.35.144	07	21
17.35.150	09	21
17.35.153	10	37
17.35.156	25	33
17.35.162	14	25
17.35.180	21	07
17.35.193	31	39
17.35.195	12	23
17.35.195	25	31

CODIGO	REF.	PAG.
17.35.195	10	33
17.35.195	32	39
17.35.201	05	33
17.35.205	15	33
17.35.231	19	19
17.35.231	16	21
17.35.231	12	29
17.35.257	08	19
17.35.257	07	29
17.35.267	26	19
17.35.268	13	19
17.35.269	31	19
17.35.271	14	19
17.35.273	10	19
17.35.273	16	29
17.35.286	15	29
17.35.289	19	13
17.35.292	10	13
17.35.296	11	13
17.35.297	28	13
17.35.299	21	13
17.35.302	14	09
17.35.302	18	13
17.35.307	09	09
17.35.323	01	13
17.35.325	27	19
17.35.355	30	39
17.35.357	06	39
17.35.360	33	19
17.35.367	10	35
17.35.368	07	19
17.35.370	03	23
17.35.370	09	33
17.35.373	04	19
17.35.373	04	21
17.35.373	04	29
17.35.395	11	07
17.35.403	17	35
17.35.408	18	35
17.35.411	22	35
17.35.414	06	23
17.35.419	13	41
17.35.419	22	43
17.35.421	25	41
17.35.421	15	43
17.35.422	30	41
17.35.422	19	43
17.35.423	07	17
17.35.427	09	15
17.35.431	11	15
17.35.433	08	15
17.35.433	06	17
17.35.434	22	15

CODIGO	REF.	PAG.
17.35.436	08	17
17.35.437	03	15
17.35.437	05	17
17.35.438	04	15
17.35.438	03	17
17.35.439	02	15
17.35.439	04	17
17.35.440	01	15
17.35.440	01	17
17.35.453	12	33
17.35.467	17	09
17.35.469	08	09
17.35.474	01	35
17.35.477	06	07
17.35.482	14	07
17.35.483	26	09
17.35.484	22	09
17.35.486	17	33
17.35.509	16	25
17.35.509	16	27
17.35.536	06	25
17.35.536	06	27
17.35.537	01	25
17.35.537	01	27
17.35.541	11	23
17.35.546	09	23
17.35.554	10	23
17.35.568	05	35
17.35.573	24	35
17.35.578	32	19
17.35.578	20	29
17.35.579	11	21
17.35.580	07	25
17.35.581	08	25
17.35.582	32	13
17.35.583	33	13
17.35.591	11	09
17.35.593	23	09
17.35.598	07	31
17.35.599	02	31
17.35.601	16	05
17.35.604	33	39
17.35.605	13	09
17.35.606	15	07
17.35.613	17	09
17.35.614	01	23
17.35.631	20	25
17.35.631	20	27
17.35.632	17	25
17.35.632	17	27
17.35.633	18	25
17.35.633	18	27
17.35.636	31	33

CODIGO	REF.	PAG.
17.35.637	16	33
17.35.643	14	27
17.35.647	20	07
17.35.647	07	09
17.35.650	01	05
17.35.663	12	05
17.35.683	13	05
17.35.692	14	39
17.35.693	15	39
17.35.703	21	27
17.35.709	34	19
17.35.711	05	25
17.35.711	05	27
17.35.713	03	25
17.35.713	03	27
17.35.715	18	23
17.35.723	15	23
17.35.724	16	23
17.35.730	16	17
17.35.735	17	17
17.35.736	15	17
17.35.741	13	17
17.35.742	14	17
17.35.743	12	17
17.35.748	07	43
17.35.750	06	43
17.35.751	23	43
17.35.752	08	11
17.35.753	07	23
17.35.754	05	23
17.35.755	26	31
17.35.757	21	41
17.35.760	11	41
17.35.762	34	41
17.35.771	14	23
17.35.772	13	23
17.35.773	10	31
17.35.785	18	31
17.35.785	23	39
17.35.787	22	31
17.35.787	27	39
17.35.788	11	31
17.35.788	29	39
17.35.789	14	31
17.35.789	16	39
17.35.790	28	31
17.35.790	34	39
17.35.795	10	17
17.35.796	09	17
17.35.800	25	05
17.35.801	22	05
17.35.802	21	05
17.35.803	24	05

CODIGO	REF.	PAG.
17.35.806	23	23
17.35.807	06	15
17.35.808	38	13
17.35.809	28	09
17.35.810	38	19
17.35.810	21	21
17.35.810	21	29
17.35.812	27	05
17.35.813	06	19
17.35.813	06	21
17.35.813	06	29
17.36.110	20	05
17.37.243	07	27
17.37.244	08	27
21.04.016	21	33
27.04.323	21	15
27.04.323	09	35
27.05.306	19	15
27.18.272	07	41
27.18.273	28	41
27.18.685	03	31
27.18.728	21	31
27.18.728	26	39
27.18.887	05	31
27.27.144	04	35
27.28.269	02	35
27.30.332	07	13
27.31.410	27	33
27.36.310	03	13
27.38.325	26	13
27.38.328	05	13
27.38.330	04	13
27.38.332	25	13
27.38.395	20	13
27.38.426	04	07
27.38.432	01	07
27.38.434	02	07
27.38.435	03	07
27.38.446	14	33
27.38.779	24	13
27.39.142	07	15
37.01.091	26	05
37.01.091	07	33
37.37.617	20	09
44.01.208	23	05
50.01.038	18	05
50.01.038	13	33
50.04.055	06	35
51.01.474	09	25
51.01.474	09	27
51.01.474	09	31
51.01.474	13	39
70.01.100	12	09

CODIGO	REF.	PAG.
70.04.251	09	19
70.04.251	17	29
70.04.272	35	19
70.04.278	17	23
70.04.278	33	41
70.04.289	25	19
70.04.289	08	21
70.04.291	09	39
70.04.292	24	19
70.04.383	06	37
70.04.406	22	13
70.04.408	30	33
70.04.436	05	09
70.04.438	10	09
70.04.642	37	13
70.04.665	20	15
70.04.669	26	33
70.04.695	11	05
70.04.695	16	07
70.04.695	34	13
70.04.695	10	15
70.04.695	16	19
70.04.695	23	21
70.04.695	24	29
70.04.696	01	41
70.04.696	01	43
70.04.697	17	05
70.04.701	11	35
70.04.717	06	31
70.04.718	15	25
70.04.718	15	27
70.04.729	06	05
70.04.729	03	19
70.04.729	03	21
70.04.729	03	29
70.04.729	01	33
70.04.729	16	41
70.04.729	10	43
70.05.426	04	11
70.07.555	16	13
70.07.555	15	15
70.07.555	15	19
70.07.728	15	31
70.07.728	17	39
70.08.107	14	35
70.11.104	21	35
70.11.353	30	13
70.11.354	12	13
70.11.354	14	15
70.11.354	11	19
70.11.354	30	19
70.11.354	18	29
70.11.354	20	33

CODIGO	REF.	PAG.
70.11.355	09	05
70.11.355	18	07
70.11.355	04	09
70.11.355	36	13
70.11.355	37	19
70.11.355	10	21
70.11.355	20	23
70.11.355	23	29
70.11.355	27	31
70.11.355	12	35
70.11.355	22	39
70.11.355	27	41
70.11.355	17	43
70.11.356	15	05
70.11.356	29	19
70.11.356	20	21
70.11.356	22	23
70.11.356	10	25
70.11.356	10	27
70.11.356	01	39
70.11.357	04	05
70.11.357	02	19
70.11.357	02	21
70.11.357	02	29
70.11.357	03	33
70.11.357	08	39
70.11.357	18	41
70.11.357	12	43
70.11.358	20	19
70.11.358	17	21
70.11.358	13	29
70.11.360	11	17
70.11.360	06	33
70.11.360	05	41
70.11.389	13	25
70.11.389	13	27
70.11.413	07	07
70.11.514	27	13
70.12.548	22	33
70.14.015	36	41
70.14.021	11	39
70.14.039	08	31
70.14.039	12	39
70.14.041	02	25
70.14.041	02	27
70.14.041	14	41
70.14.041	09	43
70.14.205	29	33
70.16.010	04	25
70.16.010	04	27
70.16.010	23	35
70.16.026	19	05
70.17.006	08	33

CODIGO	REF.	PAG.
70.17.025	08	35
70.17.026	10	07
70.17.026	13	13
70.17.026	23	15
70.17.026	18	33
70.17.041	17	13
70.17.041	23	19
70.17.041	14	21
70.17.041	08	29
70.17.041	09	41
70.17.043	04	23
70.17.044	19	09
70.17.055	15	41
70.17.057	02	23
70.17.063	03	35
70.18.004	09	37
70.18.007	17	15
70.18.008	14	13
70.18.013	05	05
70.18.013	13	07
70.18.013	06	09
70.18.013	39	19
70.18.013	22	21
70.18.013	19	23
70.18.013	22	29
70.18.013	20	35
70.18.076	10	39
70.18.237	23	07
70.18.244	23	33
70.19.002	25	09
70.19.003	09	11
70.19.006	16	35
70.19.155	31	13
70.19.156	23	13
70.19.156	16	15
70.19.156	12	19
70.19.156	19	29
70.19.156	19	33
70.19.157	10	05
70.19.157	17	07
70.19.157	03	09
70.19.157	35	13
70.19.157	36	19
70.19.157	21	23
70.19.157	17	31
70.19.157	13	35
70.19.157	21	39
70.19.157	02	41
70.19.157	02	43
70.19.159	14	05
70.19.159	28	19
70.19.159	19	21
70.19.159	11	25

CODIGO	REF.	PAG.
70.19.159	11	27
70.19.159	04	31
70.19.159	02	39
70.19.160	03	05
70.19.160	01	19
70.19.160	01	21
70.19.160	01	29
70.19.160	02	33
70.19.160	07	39
70.19.160	17	41
70.19.160	11	43
70.19.186	08	07
70.25.002	29	13
70.28.002	20	31
70.28.002	25	39
70.34.245	09	07
71.01.025	01	09
71.04.006	23	31
71.04.006	28	39
71.06.062	19	07
73.01.215	23	41
73.01.215	14	43
73.04.253	19	31
73.04.253	24	39
73.04.254	24	31
73.04.254	20	39
75.01.033	24	33
75.01.071	15	13
75.01.071	13	15
75.02.023	06	13
75.02.023	05	15
76.01.012	02	13
76.01.012	18	15
81.01.005	12	31
81.01.005	19	39
81.01.091	26	41
81.01.091	16	43
83.01.099	16	09
83.01.115	08	13
83.04.012	15	09
83.04.012	09	13
89.01.307	05	45
89.01.320	01	45
89.01.399	04	45
89.01.596	02	45
89.01.719	03	45
89.01.798	06	45
89.01.800	07	45
89.01.803	08	45
89.01.804	09	45
89.01.805	11	45
89.01.810	10	45
89.18.004	12	45

CODIGO	REF.	PAG.
89.18.005	13	45
89.18.006	14	45
90.01.055	05	07
92.01.021	07	37
92.01.032	06	11
92.02.005	02	11
92.02.005	02	37
92.02.102	01	11
92.02.102	01	37
92.03.006	02	09
92.03.008	27	09
92.03.008	10	11
92.05.158	08	37
92.05.160	05	11
92.05.161	04	37
92.11.039	07	11
92.11.040	11	37
92.12.004	03	11
92.12.017	03	37
92.12.193	05	37
93.03.002	22	19
93.03.002	15	21
93.03.002	11	29
93.05.005	21	09
93.05.005	24	15
93.05.005	02	17
93.05.005	17	19
93.05.005	12	21
93.05.005	08	23
93.05.005	12	25
93.05.005	12	27
93.05.005	09	29
93.05.005	13	31
93.05.005	11	33
93.05.005	07	35
93.05.005	05	39
93.05.005	29	41
93.05.005	37	41
93.05.005	04	43
99.01.025	19	25
99.01.025	19	27
99.01.074	16	31
99.01.074	18	39
99.01.075	31	41
99.01.075	20	43

ANOTAÇÕES